

# TYSOE & DISTRICT RECORD

MARCH 2025

Issue No: 854

Annual Subscription £7



Price £1

## Announcing our New Website!



### CELEBRATING 74 YEARS OF THE RECORD



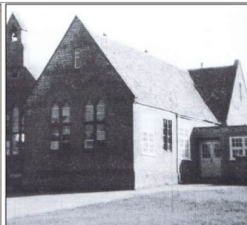
1951

1st newsletter  
published in March.  
Price 3d



1962

New Format:  
1962-1965  
Price 4d



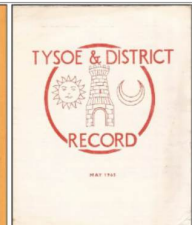
1962

Production moves to the  
school. Children helped with  
the Christmas editions



1963 -1965

The logo evolves: The sun represents Sunrising Hill, the  
castle at Edge Hill and the crescent is a reference to an  
ancient artefact found nearby (allegedly)



[www.tysoerecord.org](http://www.tysoerecord.org)

#### In this issue you can read about:

- How the Tysoe Record has evolved
- Technology Advances—Is AI a blessing or a curse?
- The play's the thing! - A Review of Hamlet at the RSC
- Saying goodbye to Foxtrot Oscar at Herbert's Farm
- . . . And much more!

## INTRODUCING THE TYSOE RECORD'S WEBSITE - [www.tysoerecord.org](http://www.tysoerecord.org)

A secret of survival is to change and adapt to one's environment. The Tysoe Record is no exception. In a world that is increasingly digital, we felt we needed an online presence for several reasons:

- For information, so that people new to Tysoe can find us easily on the Internet
- To work smarter, saving time and energy for our hardworking team of volunteers.
- Collecting subscriptions and advertising bookings online

Hence the website which Emma and Ben have designed for us. It is very clear, simple and easy to use. The Home page gives a brief introduction and displays a timeline showing how the Record has changed and evolved over the past 74 years. There is a History tab if you want to find out more. We invite you to take a virtual tour and tell us what you think.

Stay calm and don't panic! There are no plans to turn the Record digital. Printed copies will continue to be pushed through your letterboxes by our wonderful distributors, or it will appear in your in-boxes if you prefer to receive a pdf version. The website is simply our way of ensuring *The Tysoe & District Record* is here to stay.

### THE RECORD TEAM

#### EDITOR:

Shirley Cherry, Orchard House, Back Lane, Tysoe Tel: 01295 680793

**ED ASSISTANT** - Helen Keayes

**ADVERTISING:** Ben Viollet  
advertising.tysoerecord@gmail.com

**WEB & SOCIALS:** Emma Tompkins  
Fb @Tysoe & District Record

**TREASURER & SUBSCRIPTIONS:**  
Carol Clark

### GET IN TOUCH

#### DISTRIBUTION COORDINATOR:

Jude Canning

Email your copy to  
[tysoerecord@gmail.com](mailto:tysoerecord@gmail.com)

Message us on Facebook  
[@tysoerecord](https://www.facebook.com/tysoerecord) Hard copy to Shirley at Orchard House, Back Lane or Carol at 16 Windmill Way.

**Next issue: April 2025**  
**Copy deadline: Monday 17th**  
**March 2025**

## Subscriber News

Renewals are imminent with the new subscription year starting from April 2025 through to March 2026. Due to increasing print costs and bigger issues - we are now producing more 44 page 'bumper' Records - we are having to increase the annual subscription from £5 to £7 for 10 copies. For mail subscribers, the price will now be £17 for the year (the cost of stamps has also gone up). Meanwhile the pdf version remains the same at £5 per annum.

## Renew your Subscriptions Online

We would like to encourage our subscribers, those who are able to do so, to renew their subscriptions online via: [www.tysoerecord.org/page/subscribe](http://www.tysoerecord.org/page/subscribe). This will make life easier for our distributors and mean they won't have to come knocking on your door for payment. Please renew online before the **end of March**, so we can manage the transition to online subs and save Carol, our Treasurer, from stressing!

		
In the Post £17.00	Through Your Door £7.00	Via Email £5.00

## Advertiser News

We are very grateful to all our advertisers for their continuing support. Likewise, the new advertising year starts on 1st April. The Record relies on advertising to help cover costs and keep our subscriptions low. To help offset the increases in print prices, we are raising advertising rates by roughly 10%. The advertising team will be contacting existing advertisers about rebooking. If you are a new advertiser, please get in touch via the website [www.tysoerecord.org/page/advertise](http://www.tysoerecord.org/page/advertise) or by email. Space is limited.

**Extra bonus!** In return for your continued support, we are offering advertisers the chance to promote their products and services on our new website, *for no extra cost*. You can have a listing which links through to your own website and/or social pages. Just give us your details and we will do the rest!

The Editor

## HOW THE TYSOE RECORD HAS EVOLVED

As The Record enters a new era with the launch of its website ([www.tysoerecord.org](http://www.tysoerecord.org)), let's take a look at how its production has evolved over the years.

It was first produced in 1951 by Ernest Farbrother as a result of complaints that items submitted to the local papers were printed late, if at all, apparently due to a shortage of newsprint at the time. This first format, comprising two folded quarto sheets, was printed commercially but at reduced rates by Tustain of Long Compton.



In 1962, Tustain pulled out of the deal, due to more lucrative work, and Farbrother (who was also the school headmaster) resorted to using the school secretary to type up copy onto stencils, and producing the issues on the school duplicator, often operated by some of the older pupils.

A bit later, bulk printing (probably a year's worth at a time) of the covers and associated advertisement pages was outsourced to Maisey in Leamington. The date of the issue was stamped on each individual cover using the sort of date stamp beloved by librarians!



Judging from The Record's appearance circa 1990 it looks as though the duplicator copy method had been replaced by computer-generated copy, but it was predictably not all plain sailing - in April 2008 we read "You may be wondering what has happened to the January February and March editions of the Record. ... The Secretary's new computer crashed in January, thankfully the fault has now been rectified, but too late to resurrect the missing editions."

Also in 2008 we find printing being undertaken by the Old Fire Station with the first colour edition produced at the end of 2019.

Today, the copy is assembled by the editor on a laptop using a combination of Publisher and Canva software, with the resulting pdf file being emailed for printing. Goodness knows what The Record will look like in another twenty years!

Carol Clark

## TECHNOLOGY ADVANCES - IS AI A BLESSING OR A CURSE?

AI comes up daily in the media and it's going to have a big influence on our lives. The Editor requested a piece on AI and I decided to base it around my job at Warwick University. Then it occurred to me that I could ask a 'trusted' form of AI to write it for me. So, I asked: 'What are the good and bad points about AI in biological research and teaching?'. This is the slightly abbreviated reply:

*AI has a significant impact on both biological research and teaching, offering numerous benefits but also presenting some challenges:*

### Benefits

1. **Enhanced Data Analysis:** AI can process and analyse vast amounts of biological data quickly and accurately, uncovering patterns and insights that might be missed by humans.
2. **Accelerated Research:** AI algorithms can speed up the research process by automating routine tasks, designing experiments, and predicting outcomes.
3. **Personalized Learning:** AI can provide personalized learning experiences for students, helping them understand complex biological concepts at their own pace.
4. **Improved Accessibility:** AI tools can make biological education more accessible by providing interactive simulations, virtual labs, and other resources that can be accessed remotely.

### Challenges

1. **Ethical Concerns:** Use of AI in biological research raises ethical issues, particularly regarding data privacy and the potential misuse of AI-generated biological designs.
2. **Bias and Accuracy:** AI systems can inherit biases from the data they are trained on, leading to inaccurate results.
3. **Technical Barriers:** Implementing AI in biological research and education requires significant technical expertise and resources.
4. **Dependence on Technology:** Over-reliance on AI tools might reduce the development of critical thinking and problem-solving skills in students and researchers. It's important to balance the use of AI with traditional methods.

Suffice it to say that my colleagues and I have already had to adapt our teaching approaches to deal with the fourth challenge, but I'm looking to do some work exploiting benefits 1 and 2!

Prof Rosemary Collier

## BURNS NIGHT - A PROPER HIGHLAND FLING!



### Burns Night in the Village Hall-25th January 2025

What a fun-packed evening we had to celebrate the birth of Robert Burns on this day in 1759. It was full of everything you would expect - good food, wine, whisky, poetry, toasts, tartan, kilts, and sashes, Scottish dancing and of course a piper.

On arrival guests were given a welcome drink and in the McNulty room photographs were taken by Ben Keyser, against the backdrop of a highland scene.

80 people sat down at 3 long rows of tables, which were covered in tartan tablecloths made by Linda Johnson. Pots of heather and printed table cards, together with tartan bunting, made by Carol Clark, added to the atmosphere.

We were welcomed in Gaelic by Ben Viollet, who looked resplendent in traditional Highland dress. He explained that "Failte" literally means a hundred thousand welcomes.

Following tradition 'The Selkirk Grace' was given by local Scotsman David Low and the haggis, was proudly piped in by Geoff Fraser and carried by Chris Locke. David Low then 'addressed' the haggis with words from Robert Burns' famous poem and ceremonially cut it open using a Sgian Dubh..

The 'scran' (or food to us English) had been prepared by Chris Locke and her wonderful team of helpers. It consisted of Loch Fyne smoked salmon pinwheels and Lockerbie cheddar with pineapple; Haggis topped with neeps & tatties was served with whisky sauce; and for dessert a Topsy Laird Trifle. It was all delicious, especially the extremely boozy trifle!



'The Immortal Memory' was presented by David Low's son Alan who compared Rabbe Burns with modern day celebrity Jeremy Clarkson! Alan felt their similarities included both coming from humble beginnings, being writers, and liking women. Rabbe Burns is said to have fathered at least 12 children from 4 different women before he died aged only 37. Clarkson is the face of Amazon and Burns the face of Scotland, whose inspirational legacy lives on around the world.

We were then entertained by Gordon Polson from Red Horse Close who gave 'The Toast to the Lassies' in his recognisable Scottish accent and his wife Janet responded with her amusing 'Toast to the Laddies'.



At last it was time for dancing to the music of 'The Cat's Whiskers' with band leader David. The very patient 'Caller' had her work cut out to keep everyone turning in the correct direction. Whether dancing or watching it was full of hilarity.

What made the evening extra special, was all the local involvement and the fact that most of the 80 guests had entered into the spirit of the occasion by wearing tartan. EVERYONE thanked the organisers and there can be no better praise than they wholeheartedly agreed they would like to do it again next year!!

A rendition of Rabbe Burns' poem 'Auld Lang Syne' traditionally concluded the evening.

Helen Keayes, Ed Assistant



Have you ever considered where our tea comes from?

It could well come from a tea plantation in the highlands of Sri Lanka (formerly known as Ceylon), where it was introduced in 1867 by James Taylor, a young Scotsman. At the time coffee was grown on most plantations but when the coffee trees were destroyed by a fungus, tea became an alternative crop. It remains a key export today.

If you take the train from Kandy to Nuwara Eliya you can see the luscious bright green of the tea bushes growing on the hillsides. They thrive in the perfect climate of misty mornings, rich soil, and gentle sunshine. From the window you can watch the leaves being handpicked by the workers with baskets on their backs.



Once the fresh green leaves arrive at the tea factory they are withered, where the leaves lose excess moisture, softening them for the next steps. Then carefully rolled to release their natural juices, which contribute to the flavour and aroma of the tea. A process still undertaken today using 19th and 20th Century British made equipment (when things were built to last). Fermentation follows, a crucial step that determines the tea's flavour profile.



Black teas are allowed to fully ferment, while green teas are lightly processed to retain their fresh, vegetal notes. After fermentation, the leaves are dried to lock in the flavours. Finally, the tea is sorted, graded, and packaged. The factory now uses a new Chinese electronic colour sorter machine to inspect the tea.



Tea is graded into a variety of fine teas, each with their own distinctive flavour and packaging, ranging from strong black teas to delicate white teas. The lowest grade or ‘dust’ as it is called can be found in the most popular brands of teabags. From the factory, the tea is shipped directly to tea lovers worldwide.

So, every time you take a sip of tea just think, it’s had an exotic journey before it even touches your lips!

Photo credit: Roland Cherry



The Editor

## Places where you can get a good cuppa in Tysoe!

### Tysoe Tea Room



Always a warm welcome!

We offer a wide range of hot teas and coffees, soft drinks, delicious sandwiches, a variety of cakes, toasted teacakes, scones.

**Opening times: Wed—Sat 9am-3pm**

### CHURCH FELLOWSHIP

COFFEE MORNING

**Tuesday 18th at St Mary’s Tysoe**

from 9:30am

with **Stay and Play** for preschool children, carers and parents



## your Community Hub

Tysoe Village Hall  
(dementia friendly) CV35 9TF

Every Friday morning  
10am - 12 noon  
Everyone is welcome

Tea, coffee, biscuits, chat, laughter, advice and support all available here



talkdementia  
Advice and Support for Carers of loved ones living with dementia  
For further information contact Paul and Heather on 01295 488376

**Upton House and Garden Pavilion Café** For those of you who are members of the National Trust, there is always the option to visit Upton House and enjoy a cup of tea, with a freshly baked scone or piece of cake at their excellent Pavilion Café. Check the opening times online: <https://www.nationaltrust.org.uk/visit/warwickshire/upton-house-and-gardens>



Tysoe WI met on a cold and damp February evening to hear from Julianne Mold about her personal journey - from working on the family farm just outside Rugby with her husband and son, to diversifying in 2019 and creating *Meadow Field Luxury Glamping*, Julianne or Jules as she prefers to be called, referred to "finding your happy place" as she described her journey, both personally and in developing the business.

Both Jules' parents and her husband's family played their part and supported the venture from building the safari tents, painting the interiors, sewing curtains and landscaping the site. A meadow was identified as the perfect spot for glamping, safari tents were positioned to provide beautiful countryside views, and an orchard of heritage fruit trees was planted to enhance the landscape also providing a fruit crop.

If like many of us, you're thinking 'glamping's' not for me, BE prepared to have your minds changed at Meadow Field, there are two safari tents (one dog friendly), with no more planned to maintain privacy and space. Each tent has three bedrooms with comfy beds and luxury linen, a kitchen fitted with a fridge, sink and microwave, shower room, heating and that all important wifi!

If you have family visiting and are looking for both a comfortable place for them to stay with plenty of space for little people to run around freely, it may be the ideal place, and there are three Alpacas to make friends with too. Take a look on their website: [www.meadowfieldglamping.co.uk](http://www.meadowfieldglamping.co.uk)

**Next months' meeting on 5th March** is with Catherine Wythe talking to us on 'Housekeeping and High Finance' - so you may know more than you think.

New members always made very welcome, come along to Tysoe Village Hall on the 1st Wednesday of the month and join us!

Linda Johnson

Follow us on Facebook, email [tysoewi1917@yahoo.com](mailto:tysoewi1917@yahoo.com) or visit  
[www.tysoewi.com](http://www.tysoewi.com)

## ABOUT CARDIOPULMONARY RESUSCITATION (CPR)

Most of us have heard of CPR; but in an emergency would you have the confidence to commence CPR and look after the person until an ambulance arrives?

Last month Tysoe Parish Council arranged for a group to be taught CPR by the Shipston First Responders. For several this was a revision lesson, but for many that evening might be the difference between life and death for someone. CPR is not complicated to learn; but, without it, in many instances, a heart stoppage is unlikely to have a happy outcome.

More than anything the evening made us all realise that if someone has stopped breathing, whatever we do can't make things worse! Like most things, practice makes perfect and we could all do with some practising to prepare us for the worst case. We also need to familiarise ourselves with precise locations of defibrillators in the village. Thank you very much to the PC for organising the evening I hope there will be more of them to spread the word. It is such an important skill to have.

David Sewell

### TYSOE COMMUNITY DEFIBRILLATORS

We have four 24-hour, publicly available Defibrillators in Tysoe, with kits for severe bleeding too, supported by Shipston First Responders. **In an emergency always ring 999 first to get the code to open the cabinet – and then go to the cabinet you are directed to, as the nearest one may not be available and you will waste valuable time:**

Locations:

1. **The Peacock Inn**, Main St, Upper Tysoe, CV35 0SE What Three Words [///washed.thumb.masses](#)
2. **Tysoe Children Group**, The Old Fire Station, Main Street, Tysoe, CV35 0SR What Three Words [///gradually.defrost.cowboy](#)
3. **Paxton's Garage**, Main Street, Upper Tysoe CV35 0TJ What Three Words [///someone.observers.type](#)
4. **Tysoe Sports Pavilion**, Playing Fields, off Main Street, Tysoe, CV35 0SR What Three Words [///committee.graduated.fixture](#)

Amanda Venables

## MAKING SPACE FOR NATURE - THE TRIANGLE



The Triangle's year starts with snowdrops, and I've just planted some more, kindly donated by Irene Beever.

Now is the time to plan a biodiverse summer. I've been thinking how best to manage the Triangle (junction of Sandpits / Oxhill Roads) to provide plenty of colour and diversity, while not obscuring drivers' vision. Most wildlife areas have native species, but including some 'garden' flowers in the Triangle will provide colour over a longer season. Taking inspiration from 'Pictorial Meadows', I plan to sow many of the species featured in their 'meadow turf' mix which responds well to mid-season cuts, keeping it low. The area is too small for turf. It includes bird's foot trefoil (see inset) which David Sewell established in the Triangle last year.

Rosemary Collier

### **Up close and personal with a kestrel**

Out walking on a frosty January day our dog was suddenly attracted to a frantic fluttering of bird wings in the hedge.

We expected it to be a pigeon but as we drew near we could see it was a raptor. A kestrel's leg and wing had become trapped in the brambles and thorns.

Fortunately we both had strong gloves and a pair of secateurs so set about the surgical operation of freeing the distressed bird while trying to prevent it from struggling and becoming further enmeshed. Success eventually, and away it flew, obviously relieved although initially it had been somewhat uncooperative.

It was an extremely rare privilege to have been so close and able to touch and hold such a gorgeous creature. Shades of the wonderful film Kes?

Simon Forrester





## WOT2GROW NEWS

Work in the community orchard has continued throughout January and February despite the cold and wet weather.

Members have been very busy pruning the apple trees. Many trees have been pruned from the top to enable the branches to be more easily reached for picking next autumn, as some had grown quite tall.

The main reasons for pruning are to get better fruit quality (we are not so worried about quantity as there are usually more than enough apples); to let light and air into the trees to ripen the fruit and blow away spores and disease; to keep the trees a smaller size as already mentioned, and to remove any dead, damaged or diseased branches.

When pruning a goblet shape is ideally formed, with the trunk being the 'stem' of the goblet. As apple trees fruit on their horizontal branches, the vertical shoots tend to be cut out first.

**On Saturday 29th March from 3.00pm there will be a Bonfire Party at the Orchard.** This will involve burning an enormous pile of apple tree prunings, as a result of all the work we have carried out this winter. There will of course be tea, coffee and cakes. Everyone loves a bonfire, so hope you all like the sound of this and will come and support the occasion. Non-members also very welcome.

Membership of the community orchard is open to everyone living in Whatcote, Oxhill, Tysoe and surrounds, and members get fruit every week during the summer and autumn months. Please come and join us!

The orchard is next to the allotments on the Shenington Road in Tysoe. Email [mirandawot2grow@gmail.com](mailto:mirandawot2grow@gmail.com) to find out more, or call any of the contacts below:

Allie Aves

**Miranda Forrester (680265), Paul Sayer (680451), Sue and Mike Sanderson (688080)**





## 'INTO THE BREACH' AT THE VILLAGE HALL

— Play written and performed by Mark Carey

It was certainly worth venturing out on a dreary February Saturday evening to our Village Hall, where professional writer and actor Mark Carey told the story of George Crocker, an odd job man who had lived all his life in a small village in Devon. George had only left the village once in 1916 when he was 35 years old and was sent to France to fight in the Great War.

The play is set in 1942 when George, in an attempt to brighten up his life, joins a local Amateur Dramatics group. He auditioned to play 'Widow Twanky' but local 'Luvvy' Simon Trottley-Barnes had ambition to bring Shakespeare to rural communities, and despite his protestations, George found himself taking on the role of Henry V instead!

Mark Carey had cleverly woven together the battle of Agincourt and the horrors of life in the trenches using Shakespeare's prose. Henry V's rousing speeches were applicable to both situations. Mark played not only the 5 main characters but up to a dozen lesser parts as well, by the use of simple props such as hats or glasses, and gestures that left us all in awe of both the story and his acting prowess.

Helen Keayes, Ed Assistant

**Swan Singers** Community Choir  
based in Kineton, Warwickshire



**Inspired by Shakespeare**

**Saturday 5th April, 7.30pm**  
The Guild Chapel,  
Stratford-upon-Avon

**Directed by Gary Beman**  
**Accompanied by Gustavo Schafaschek**

A mixed programme of songs inspired by the works of the Bard


**FREE Entry** To guarantee entry, get your tickets in advance. Scan the QR code or go to [www.ticketsource.co.uk/swan-singers](http://www.ticketsource.co.uk/swan-singers)



Retiring Collection

**KADS**  
Kineton Amateur Dramatic Society

*A witty script full of rhyme - The Public Reviews*



**Cyrano de Bergerac**  
by Edmond Rostand  
adapted by Glyn Maxwell

**April 2nd 5th 2025 · 8pm**  
**Kineton Village Hall**

Tickets £9 at [kads.org.uk](http://kads.org.uk) or call 01295 680487

This production of Cyrano de Bergerac (Maxwell) is presented by arrangement with Concord Theatricals Ltd [www.concordtheatricals.co.uk](http://www.concordtheatricals.co.uk)

## REVIEW OF HAMLET—RSC

‘The play’s the thing’ said Hamlet. It is. Anyone watching a production of Hamlet will be reminded of so many sayings, many of which have survived even today: ‘neither a borrower or a lender be’; ‘the lady protests too much’; ‘alas, poor Yorick’; and, of course, ‘to be, or not to be’. The list goes on.



Luke Thallon plays Hamlet

Every director of Hamlet is keen to show their own interpretation, and this performance, directed by Rupert Goold, is no exception. So, I was slightly nervous when I read that the stage is set aboard a ship, and not just any ship, but quite possibly the Titanic.

However, those doubts were swept away with the opening scene, showing a burial at sea (Hamlet’s father), accompanied by a small but beautiful live orchestra, and a siren-like chorus.

Luke Thallon, making his RSC debut as Hamlet, captivated and delighted the audience as he passed backwards and forwards between the stages of grief, malice, indecision and humour (just a well-timed tilt of the head could elicit a chuckle).

The whole production was gripping, sometimes quite literally, with the severity of the storm matching the tumultuous tragedies within the play. We, the audience, knew that the characters were doomed, much like the Titanic, but how anyone could act during the final scene – sword fights, poisonings and madness – given what was happening with the stage is a credit to their bravery as much as their athleticism!

Tysoe’s very own Anton Lesser played the ghost of Hamlet’s father – a strong, harrowing performance as we listened to the circumstances of his murder. When asked what it was like behind the scenes he replied: ‘Utter chaos!’ An earlier performance in rehearsal had to be stopped temporarily as the ladders hadn’t engaged for him to climb down.

After the noise and chaos of the analogous shipwreck, peace descended on Hamlet, allowing him to die with grace. The lights went down...

...the rest is silence.

Jackie Keyser



# TYSOE



## FLOWER SHOW & FETE



Save the date for a great family day out

**16th August 2025**

## We're excited to launch

# [www.tysoeflowershow.org.uk](http://www.tysoeflowershow.org.uk)

## Who are the Friends of Tysoe Flower Show?

For many years Tysoe Flower Show & Fete has received numerous exceptionally generous donations from our patrons. Over time, thousands of pounds have been invested into countless shows which not only have enriched the lives of tens of thousands of visitors, but also together with the profits raised, have benefited many of the wonderful clubs, facilities, charities and good causes within the Tysoe area. As the show continues to evolve, the committee have renamed this important group of benefactors Friends of Tysoe Flower Show.

## How can you support the 2025 show?

If you would like to support the upcoming 2025 show, planning for which is already well underway, donations can be made online via our website or if you prefer, donations can be made via cheque, payable to: Tysoe Flower Show & Fete and posted to our Treasurer; Mrs Y Dillon, 7 Avon Avenue, Middle Tysoe, Warwickshire, CV35 0SP or via BACS to A/C: Tysoe Flower Show & Fete, Sort Code: 30-98-26, A/C No: 01783328

The committee, on behalf of Tysoe, gives thanks for your support.



# your Community Hub

Tysoe Village Hall  
(dementia friendly) CV35 9TF

Every Friday morning  
10am - 12 noon  
Everyone is welcome

Tea, coffee, biscuits, chat, laughter,  
advice and support all available here



Advice and Support for Carers of loved ones living with dementia  
For further information contact Paul and Heather on 01295 688376

## WHY VOLUNTEER?

Look at any volunteering website and you will find numerous reasons to volunteer. Volunteering strengthens communities, it brings people together, it gives you a chance to give back, it can promote self esteem, and many more valid reasons. My volunteering journey began some ten years ago following the death of my lovely mother, she had vascular dementia following a stroke and a once gregarious extrovert ended up socially isolated. I think that she would have enjoyed something like the Community Hub which is on offer here in Tysoe and my father, her primary carer, would have benefitted from the advice and information which is on offer. I am aware that many in Tysoe already volunteer in a variety of capacities, but there is always a need for more.

Liz Layfield-Bell

## MORE VOLUNTEERS NEEDED!

(minimum commitment one  
Friday a month). Please call  
Heather or Paul for a chat on

**Tysoe 688376**

## SPECIAL CHURCH SERVICES FOR MARCH

**5th March** - Ash Wednesday 7:30pm

**30th March** - Mothering Sunday Family Service at 11am



### HOLD THE DATES

They will be here before you know it!

**Church Fete at Tysoe Manor, Saturday 7th June**  
courtesy of Lord and Lady Marks

Evening Concert in St Mary's **Saturday 28th June**  
*'Midsummer Music for the Soul'*



## CHRISTINGLE SERVICE AT CANDLEMAS



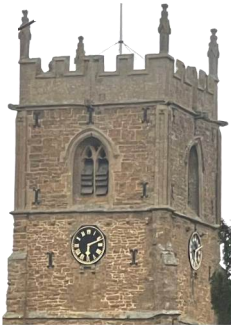
We all enjoyed our Candlemas Service on Feb 2nd with Christingles shining brightly. The school was represented by the Choir and readers who all performed brilliantly. Thanks go to Headteacher Ms Allister and the staff who prepared the children for this joyful service and to Rev George who created beautiful service sheets. Christingles were made by a small group of volunteers from the Children's Society box-holders, oranges being kindly supplied by Bart at the Tysoe Village Stores.

Everyone enjoyed a cup of coffee, biscuits and cake at the end of the service thanks to the Church coffee ladies. We are hoping for more joint services with the school in future.

The  
Children's  
Society

The Children's Society Group at St Mary's have sent over £2,000 this year to The Children's Society following fund raising events and box collections, a great result.

Gill Roache



### Our Silent Church Clock

*Stands the Church clock at ten to three?  
And is there honey still for tea?* From the poem Old Vicarage, Grantchester (1912) by Rupert Brooke.

Sadly our clock is stuck at 6.10 and has been for a while and is likely to be stuck for a bit longer yet, as the 'Escapement' has broken and needs replacing. A problem of old age apparently! It is due to be mended.

**Friday 28th March from 10:30 am to  
12:00 noon Kineton Village Hall.**

Carers4Carers

Finding support through supporting each other

Come and meet other local carers for refreshments, conversation and support. Bring your loved ones! Our talk this month will be on the sensitive topic of advance planning for end of life. We look forward to welcoming you there! For help with transport, contact Gillian on 07947 893504, email [kcarers4carers@gmail.com](mailto:kcarers4carers@gmail.com).

[www.carers4carersonthefosse.org.uk](http://www.carers4carersonthefosse.org.uk)

## NOTES FROM ST MARY'S CHURCH

It may seem strange to those outside the church that Lent doesn't begin until 5th March, whereas last year Ash Wednesday fell on 14th February. The reason is that this year Easter Day is Sunday 20th April. That is fairly late, in fact, the next time it is later is in 2038, when it will be as late as it is possible to be (25th April). There have often been calls to fix the date of Easter but our method of calculating it was adopted at the Council of Nicea in AD 325. It was agreed that all Christians should celebrate Easter on the first Sunday after the first full moon on or after the spring equinox.

Why, you may ask? Well Easter marks the date of Jesus's death and resurrection, which, according to the Bible, happened around the Jewish Passover. The date of Passover was calculated using the lunar calendar, which is based on the cycles of the moon. Jewish people use a slightly different calculation from the Christian one, so Easter and Passover do not always coincide.

Lent begins forty days before Easter Day, (excluding Sundays which honour Jesus's resurrection every week). The number forty, reminds us of the time when Jesus was led by the Spirit into the wilderness, where He fasted and prayed in preparation for His public ministry.

Ash Wednesday marks the beginning of Lent with a special service where we enter symbolically the penitential period by receiving a cross of ash, made from last year's palm crosses on our foreheads. In biblical times people would tear their clothing and wear sackcloth and ashes as a sign of mourning or repentance. Thank goodness our symbolism doesn't go that far, but our period of penitence is still the same as we prepare ourselves to celebrate Easter through this time of self-examination; of increased devotion and attention to spiritual matters.

Whatever you do, as the days lengthen, I pray that you may be drawn closer to God, through his Son, Jesus Christ.

God Bless,

*George*

Revd George Heighton

Email [revgeorgeh@outlook.com](mailto:revgeorgeh@outlook.com), Telephone 01295 680 201



# Tysoe Social Club

We are open to everyone, non-members and guests are very welcome. Upcoming in March at Tysoe Social Club we have:

- ☺ 8 March - Pete Watkins is back performing a variety of popular covers
- ☺ 12 March (wednesday) - Sourdough pizzas from 5pm, provided by Catering Angel
- ☺ 14 March - open from noon showing action from the Cheltenham Gold Cup. Food available
- ☺ 16 March (Sunday) - clairvoyant evening. Due to the success of the evening in December, we have booked another evening with local Medium, Jacqui Rogers. This is a ticketed event, £10 entry. Book early to avoid disappointment.
- ☺ 22 March - The DropOuts return to provide a night of rock and metal covers
- ☺ 29 March - Easter Bingo. Fun for all the family. £5 to play. Prizes suitable for all ages

Lauren, TSC Secretary



## Facebook post

I happened to see this on Facebook and thought it was so adorable that I asked Lauren if she'd be happy for me to share it in the Record. It came with the caption:

*"Working from home is very different to working in the office."*

Lauren Holly



The Editor

## HERBERTS FARM UPDATE



Sad times here at Herberts as we say goodbye this month to our Senior Stock Bull Happy 1 Foxtrot Oscar. Standing at over 10 years old some would say we've done well to keep him this long but with just over half the cows being either his direct daughters or half sisters (Same father) it's become nigh impossible to juggle the grazing cow groups without significantly impacting on calf & cow management.

Entirely homebred with a dam descended from the multiple prize-winning Truelove line he was one of the early drop calves descended from the easy calving Australian bull Wirruna Daffy. Having sired over 200 calves of his own I can safely say the easy calving carried through counting on one hand the number of his calves I have had to pull.

A pleasure to handle, like most farmers these days, being on my own most of the time you learn to respect a bull and appreciate a good nature, this chap comes to a gate when he's called and self loads into a trailer as soon as you drop the tailgate in the field. Feet never touched by the foot trimmer, vet never called and no corn ever – just partial to a bit of fodder beet! Foxtrot you will be missed

Monica Brown

### **Kinton & District Local History Group**

**Meeting on Friday 21st March - 37th Annual General Meeting starts at 7pm at Kinton Village Hall, followed by**

### **Daily Life in Tudor Times**

***by Martin Sinot-Smith***

New members welcome. Membership £15pa, visitors £3 per meeting.

<b>March 2025 DIARY DATES</b>	<b>BINS</b>	 <b>Food waste</b> (food waste caddy)	 <b>Recycling</b> (blue-lidded bin)	 <b>Refuse</b> (grey bin)	 <b>Garden waste</b> (green bin)
	07/03/2025	✓			
	14/03/2025	✓	✓		✓
	21/03/2025	✓		✓	
	28/03/2025	✓	✓		✓

What	Where	When	Contact
Coffee Morning (donations)	St Mary's Church	Tuesday 18 March 9am - 12noon	Drina Heighton (01295) 680201
Craft & Laugh	Village Hall (McNulty Rm)	Wednesday 12, 19 March 2pm - 4pm	Linda Johnson (01295) 680585
Fitness class with dance	Village Hall	Every Thursday 10:30am -11:30am	Eileen Mann (01295) 680921
Lunch Club	Village Hall	Friday 7 March 1pm	Nicola (01295) 680058
Mobile Library	Outside Village Hall	Tuesday 11 March 2pm	<a href="https://apps.warwickshire.gov.uk/MobileLibraries/library_routes/118">apps.warwickshire.gov.uk/MobileLibraries/library_routes/118</a>
Parish Council Meeting	Village Hall (McNulty Rm)	Monday 10 March 7.30pm	Charmaine Swift parish.clerk@tysoe.org.uk
Pickle Ball	Village Hall	Every Thursday 7.15 - 9.15pm	<a href="http://www.tysoevillagehall.org.uk/page/pickleball">www.tysoevillagehall.org.uk/page/pickleball</a>
Community Hub Coffee Morning	Village Hall	Every Friday 10am-12noon	Paul & Heather Dowler (01295) 688376
Tysoe Tots	Tysoe Primary School	Every Wednesday 9:30am - 11:30am	Rowena 07824 640902
Tysoe WI	Village Hall	Wednesday 5 Mar 7.30pm - 9pm	Christine Harrop (01295) 780765
Mothering Sunday /Clocks change	Tysoe Church & homes	Sunday 30 March, 11am service	2025 calendar

**Visit: [www.tysoerecord.org](http://www.tysoerecord.org) 'What's On' for a full listing of events!**

# UPCOMING EVENTS AT YOUR HALL



Sunday 23rd March



## MADE IN TYSOE



10.00am - 3.00pm



Weds 26th March



Sunday 30th March

## Full details at [www.tysoevillagehall.org.uk](http://www.tysoevillagehall.org.uk)

Many ticketed events sell out before being widely advertised. To avoid disappointment and to ensure hall news comes directly to your inbox please register online to our email newsletter

### Tickets online and also at Tysoe Post Office



## Painting Kitty & Dorothea's Garden

## Watercolour workshop at Upton House

10 June 2025  
10:00 - 15:00

Summer is coming

Join local artist Lizzie Bentley, suitable for all abilities, small group. £76 per person. Booking essential

[nationaltrust.org.uk/uptonhouse](http://nationaltrust.org.uk/uptonhouse)



© National Trust 2025. Registered Charity no. 205816  
Photography © National Trust ImageRight House



## Tysoe Village Stores

Opening hours:  
Mon-Sat: 09.00 – 19.00  
Sun: 09.30 – 17.00  
Tel: 01295 688333

We stock a wide variety of locally sourced products, including fresh bread and pastries, fruit and vegetables, Mabel's Milk, Fowlers cheeses, meat pies and ready meals, Gluten-free and vegetarian ranges. We now have a regular delivery from Barry the Butcher - ring us for any special orders by Wednesday and we'll have them ready for the weekend. Now offering a home delivery service for groceries, simply email us on [mytysoeshop@gmail.com](mailto:mytysoeshop@gmail.com)

## Tea Room



We offer a wide range of hot teas and coffees, soft drinks, delicious homemade sandwiches, a variety of cakes, toasted teacakes, scones and other sweet treats. We look forward to welcoming you!

**Opening times: Wednesday - Saturday 9am - 3pm**

**Email: [tysoetearoom@gmail.com](mailto:tysoetearoom@gmail.com) for any enquires**



Hi Tysoe

At February's meeting Councillors approved a new defibrillator cabinet at the Tysoe Children's Group. I have been asked to advise readers that anyone wishing to use this kit **MUST dial 999**, you will be given a code to open the cabinet and the operator will stay on the line until qualified help arrives. There are now 4 public use defibrillators in the village (see page 11). One on the Pavillion, one on the Children's Group building, one on the wall of Paxton's Garage, and one outside The Peacock Pub. Shipston Community First Responders will be running another training session soon, giving guidance on how to use the defibs. Information will be advertised on relevant Facebook Pages, and the Parish website. Posters will also be put around the village.

The work on Poolgate is finished, Further work is needed to level the verge and clear the area before spring.

Our Precept request has been submitted . Our street lighting project will be completed in a few months. The new streetlights will be cheaper to run. Our electricity supplier has changed, which we hope will also save on costs.

This year's Parish Assembly has a new look. All groups within the parish are invited to submit a short report on their past year. We will publish these as a booklet. Groups attending will have a table where they can display information about themselves and we hope two representatives will attend to answer any questions from the public. This is an open meeting, all are welcome, we hope to be able to serve refreshments too!

---

## **SAVE THE DATE**

**Saturday May 17th at 10am at Tysoe Village Hall  
New Look Parish Assembly**

---

Charmaine  
parish.clerk@tysoe.org.uk

# TYSOE VILLAGE HALL ANNUAL GENERAL MEETING

TO BE HELD IN THE VILLAGE HALL  
WEDNESDAY 19TH MARCH 2025  
DOORS OPEN 6.45PM FOR A 7.00PM START

## MEMBERS OF THE PUBLIC VERY WELCOME

### AGENDA

1. COMMITTEE MEMBERS PRESENT
2. APOLOGIES
3. MEMBERS OF THE PUBLIC ATTENDING
4. MINUTES OF THE PREVIOUS AGM (20/03/2024)
5. CHAIRMAN'S REPORT (BV)
6. TREASURER'S REPORT (JW)
7. RETIREMENT OF CURRENT OFFICERS
8. APPOINTMENT OF OFFICERS
  - a. Nominations from village organisations
  - b. Appointments of new candidates (up to four). If more than four applicants, this will be determined by the members from (a) above casting a vote.
  - c. Election by officers for positions of (a) chair, (b) Treasurer, (c) Secretary.
9. ANY OTHER BUSINESS (AOB)
10. DATE OF THE NEXT AGM
11. MEETING CLOSED



**A celebration to mark the end of hostilities  
in Europe 80 years ago.**

The Parish Council, Village Hall, Tysoe WI and the CCOTS Choir are planning celebrations on **Thursday 8th May** and **Saturday 10th May**

A celebratory Beacon on Thursday 8th May will be lit on Sherington Hill where there will be entertainment, drink and food available.

On Saturday 10th May there will be Fish & Chips, community singing and film show in the village hall.

Reserve the date and watch for further announcements of ticket availability and prices.



## DON'T BE A TOSSER!

Remember the 'don't be a litter lout' campaign? Well, the online world has adopted a more aggressive catch phrase, probably originating from down under. Social media is awash with postings from litter collectors across the globe. I first noticed this trend amongst communities from the West Midlands area, particularly Sandwell, Walsall and Aldridge. Tired of thinking it was someone's else problem they are out in force daily picking up litter that has been tossed from passing cars or just dumped. Once the litter appears others think it's a free for all. There are many groups out there right now including dog walkers (#pawsonplastic), coastal communities and many womble variants (#onemillionbags, a Bristol initiative).

The Highways Authority and local authorities with responsibility for highways can't keep up with the problem. At this time of year without the vegetation along the hedgerows it is an eyesore. So, I decided to join in the fun whilst out running. I have adopted Shipston Road from Garden Cottage to the stables (where our erstwhile MP had a base). I collect every 2-3 days and pick up 2kgs a fortnight - see photo top right. I try to recycle the cans (Red Bull with its wings are a common find) and plastic bottles. The rest goes into our black bin.



Why not join the campaign and keep Tysoe tidy? It might be a good idea if the 'Support Ukraine' banners facing you as you drive into the village had the campaign slogan on the other side to encourage people not to wind their windows down as they leave the village.

Mike Sanderson



### Yet another example of 'tossers'.

Phil Walker also highlighted litter problems on Facebook recently: "Must have been quite a party. Strewn across a gateway and verge on the 'straight mile' towards the burial ground. Can have only have come from cars. What's wrong with people???"



## ON BECOMING A THERAPEUTIC COUNSELLOR

I first experienced counselling after losing my Dad when I was 29. It hit me hard and I came to realise that this was partly due to having lost my mother when I was only 12. I learnt how, as a child, I hadn't fully processed my grief and I was now grieving for both parents. I only had a few sessions of counselling with a lovely lady who used a range of helpful therapeutic approaches and, as a result, a lot of things began to make sense regarding where I was in life, and I was able to start moving forwards.

A few years later I was doing a BA at Warwick and accessed counselling again to find some support with the demands of juggling studying and becoming a single parent of 2 teenagers. I also felt that I had chosen the wrong degree for me, and having experienced being on the receiving end of therapy I had a strong desire to work in this field myself. I could see the benefits and wanted to share these with others.

Unfortunately I couldn't afford the extra time and money to study for it then, I needed to earn a living, so I went into West Midlands Police force for the next 20 years where I worked on the front line and then in child abuse investigation. As fulfilling as this was, after reading "Becoming" by Michelle Obama, I decided to follow my dream, take retirement, and go back to Warwick to take an MSc in Counselling and Psychotherapy.



I am now in my 3rd year and having achieved a PG Diploma and over 200 hours working with clients with a variety of challenges, I am able to start my own private practice.

For more information regarding my approach please go to [www.bacp.co.uk/therapists/411310](http://www.bacp.co.uk/therapists/411310) or call me on 07874 189584.

Susan Monteith

## **SOUTH WARWICKSHIRE LOCAL PLAN (SWLP)**

The proposed SWLP has been published jointly by Stratford on Avon District Council (SDC) and Warwick District Council (WDC) for consultation. When eventually adopted, the SWLP will replace SDC's Core Strategy as the pre-eminent planning and development template until 2050 and will similarly become the template for WDC.

The SWLP contains a number of Objectives and Policies, many of which reflect similar Policies already contained within the Core Strategy and, as such, they are largely non-controversial. However, the SWLP also contains a number of proposed Strategic Growth Locations and proposed Potential New Settlements. Some of these are controversial but not all of them will make it through the verification process into the final plan.

The most controversial aspect of the SWLP is, however, the assumption on housing requirement through to 2050. This assumption has been handed down to the District Councils by diktat from national Government. The Core Strategy assumes that Stratford District will require 553 houses to be built each year, the SWLP, which will replace the Core Strategy, is proposing 1126 pa, an increase of 104%. This is a huge jump. Where are these people going to work? By contrast the conurbations of both Coventry and Birmingham have had their housing targets cut by roughly 50%.

Tysoe remains largely unaffected by the proposed policies of the SWLP. The protections contained in the Core Strategy are left in place and, in some instances, are strengthened. However, the fundamental housing assumption means that sites will be considered in Kineton, Wellesbourne, Lighthorne Heath and Shipston that should perhaps be deemed unsuitable and/or unnecessary in the housing numbers were to be recalculated. This means that, while Tysoe may remain largely unaffected, the surrounding towns and villages may be significantly affected, possibly unnecessarily.

David Roache

### **PUBLIC MEETING - Tysoe Village Hall on 25th February at 7.00pm**

**Residents are invited to attend a public meeting to learn more about the impact of the SWLP, hosted by David Roache, Chair, Tysoe Parish Council and Malcolm Littlewood, District Councillor.**

**You have until 7th March to submit comments on the SWLP online at [www.southwarwickshire.org.uk/swlp/preferred-options](http://www.southwarwickshire.org.uk/swlp/preferred-options)**



## Tysoe Post Office

At the heart of the village  
Serving the community

**Established 1866**

Post Office services (free banking, cash withdrawals, Euro's/travel money, phone top-ups).

Gifts (stockists of Gisela Graham, East of India, Salle Belle),

Cards and stationery. Local & imported flowers & plants.

Delivery local/nationwide.



Find us on Main Street  
**07816 403798**



## We're hiring!

### Nursery practitioners

Full or part-time,  
Rota basis 7.45am - 6pm

### Early years practitioner Level 2/3 Apprentice

### Office assistant

Part-time

Join our lovely team at our village based nursery in Tysoe, Warks.

Competitive pay

**Apply via**


**[tysoechildrengroup.co.uk/careers-2/](http://tysoechildrengroup.co.uk/careers-2/)**



All weather woodland stay and play for babies, toddlers and preschoolers 0-5yrs



Weekday and weekend sessions  
Birthday parties and private hire

**Follow us @woodsandwellies**  

Applecross Fields, Radway, Warwickshire  
email: [applecrossfields@gmail.com](mailto:applecrossfields@gmail.com)

## NEW PLAYGROUND TAKING SHAPE!



The past few weeks have been incredibly exciting here at TCG as we have embarked on the refurbishment of our playground. Although we haven't completed it yet, the playground is starting to take shape, and we eagerly anticipate sharing images of the final project soon.

We would like to extend our gratitude to all our parents, as well as the staff and clients of Pure Podiatry, Pure Physio, and Millie Ely Massage, for their patience during this period of construction.

Our Bag2School collection is scheduled for Tuesday, 11th March at 9.00am. We welcome bags containing unwanted clothing, bags, shoes, curtains, etc. (detailed below). The funds raised will be directed into our charity fundraising account to enrich the resources available for the children in our care. As always, your support is greatly appreciated. Please ensure bags remain dry; if dropping off outside our operational hours, kindly verify sunny weather conditions in the forecast. Bag2School accepts the following 'good quality' items for RE-USE:



<https://bag2school.com/what-we-collect>

### Items accepted include:

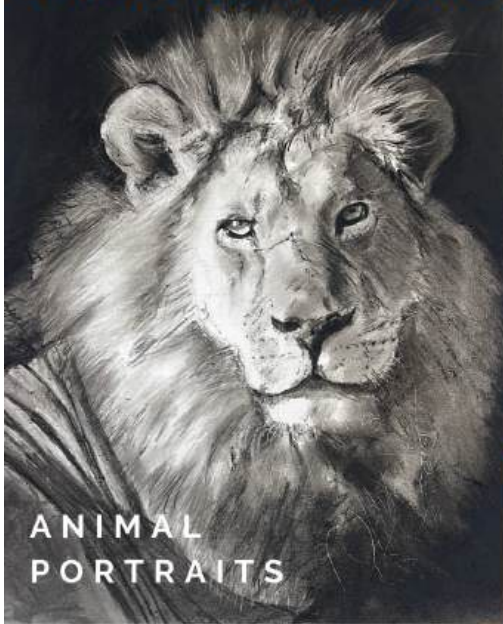
- Men's, Ladies' and Children's clothing
- Paired shoes (secured together with ties or elastic bands)
- Handbags
- Hats
- Bags
- Scarves and ties
- Jewellery
- Lingerie
- Socks
- Belts

- Soft toys
- Household linen
- Household curtains
- Household towels
- Household bedding (including bed sheets, pillowcases, and duvet covers)

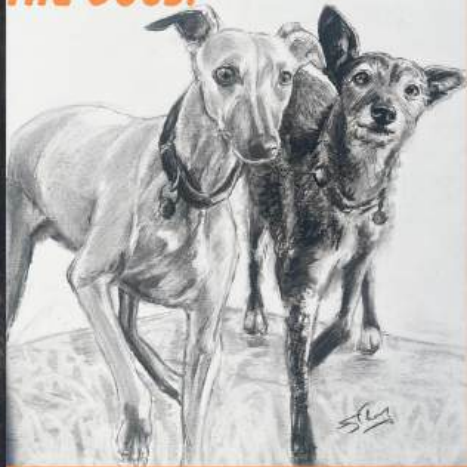
### Bag2School DO NOT accept

- Duvets and blankets
- Pillows and cushions
- School uniforms with and without logo
- Corporate clothing and workwear

## PUTTING THE CAT AMONG THE DOGS!



ANIMAL  
PORTRAITS



COMMISSIONS IN CHARCOAL



Call Shirley 07900 221120  
dogtasticportraits.co.uk

## MARCH EVENTS

8th

Kinton  
Farmers  
Market

Market Square  
Kinton

10am-12pm

23rd

Made in  
Tysoe

Tysoe Village  
Hall

10am-3pm



Fancy having a  
go?

[www.pennyvarleyceramics.co.uk](http://www.pennyvarleyceramics.co.uk)

5 Avon Avenue, Tysoe, Warwickshire, CV35 0SP

t: 01295 680700 m: 07486 452099 e: pennyvarleyceramics@hotmail.com



Penny Varley Ceramics  
Original Creations In Clay

## **THE MAKING OF TYSOE: GRAVE TALES FROM THE CHURCHYARD (10) SIZE MATTERS (EVEN WHEN YOU'RE DEAD!)**

When the Tysoe Heritage Research Group recorded the height, width and thickness of the memorials in St Mary's churchyard and the Sandpits Road cemetery we realised that, until relatively recently, headstones had been getting larger over time. To analyse this change we chose "width" as our indicator, because although height also increased it's an unreliable measure; many headstones have sunk into the turf and some have been reset or lifted out. Widths remain their original size unless seriously damaged. Our late 17th century headstones average 46cm wide while those of the early 20th century average 72cm. Adding to this increase in plot size is the late 19th century introduction of kerbs around graves. Even single kerbed graves tend to be wider than headstones. Also, whereas earlier multiple burials were often stacked in the same narrow plot, with kerbed memorials subsequent interments were frequently laid beside the original burial, doubling or even tripling the memorial footprint. Five kerbed memorials survive intact in the churchyard, but the remains of others can be seen in the marble kerbs edging the paths up to the porch. Photos taken from the tower in 1971 show lost kerbed memorials.

By the mid 20th century there was increasing concern about overcrowding and lack of space for new burials in municipal cemeteries. The 1977 Local Authorities Cemeteries Order sought to regulate municipal burial practices, a move mirrored by the ecclesiastical authorities. Strict regulations were promulgated. Coventry's latest version comes into force this Easter, specifying memorial size, shape, material, symbols, inscriptions and more (e.g. no photos or QR codes). Exceptions require a Faculty, a sort of ecclesiastical planning permission. The effect has been a tendency to homogenise the cemetery landscape at a time when wider memorialising has become more individualistic. Activities which challenge this regulatory tendency can involve ephemera, and we will return to this topic in the next Grave Tales....

David Freke

# Thomas Fox

Landscaping & Maintenance

Garden Maintenance • Mowing  
Strimming • Hedge Cutting • Pruning  
Leaf Collection • Digging over plots  
Patio Jet Wash • Border Maintenance  
Water Features • Paving • Fencing  
Tree Surgery Services

**NEW- Green Waste Removal and Recycling**

**FULLY INSURED,  
PROFESSIONAL  
AND RELIABLE  
SERVICE**

office@thomasfoxlandscaping.co.uk  
www.thomasfoxlandscaping.co.uk

**CALL NOW  
TO ARRANGE A  
FREE QUOTATION**

**01295 680691**

**UP TO  
DATE**

Previous issues of the Tysoe & District Record are available online at [www.tysoe.org.uk/tysoe-record](http://www.tysoe.org.uk/tysoe-record).

## TYSOE JUNIOR TENNIS

Ahead of some exciting news next month from Tysoe Tennis Club, we asked one of our junior members, Jasmine Fawcus to highlight her tennis progression.

“I started playing tennis at Tysoe when I was 8 years old. I took part in Friday night sessions at the Club, and I tried to play as much as I could with my family.

After a year of coaching, I started playing for the Tysoe Juniors in the Warwickshire Tennis League. This worked well as we started moving up the coloured balls and increased the size of the court, which slowly built up my confidence. I then had one to one sessions with Tom from the Club, where we worked on different aspects of my game. I now play lots of tennis at my school and I also play for and have lessons at Leamington Tennis Club. I still try to get to the Tysoe courts whenever I have time to play tennis with my family. “



Jasmine pictured after winning the Tysoe Junior Tournament in September

Club Secretary - Carol Spencer  
Email: [carol.spencer234@hotmail.co.uk](mailto:carol.spencer234@hotmail.co.uk)



*Tysoe Tennis Club*  
[www.tysoetennisclub.co.uk](http://www.tysoetennisclub.co.uk)



## The Annual Cricket Match Tysoe v Oxhill

Sunday 17<sup>th</sup> August 2025 The day after the Flower Show on  
the Playing Fields, Main Street, Tysoe

### Calling Cricketers

I have taken over the bat & ball from Fred Price and am looking to put together a team to face Oxhill.

If you want that Ben Stokes feeling come and join in! **SAVE THE DATE**

**Or** if you could help volunteer or if you could help with teas & refreshments or help setting up on the day please contact:

**Robert Startin 07964892430 / [robertstartin23@gmail.com](mailto:robertstartin23@gmail.com)**





## LETTERBOX BROWNIES

Order a sumptuous treat as a Thank You, Get Well Soon, Happy Birthday or for yourself!



Box of 4 collected  
£5.50 / posted £9.50



Box of 12 collected  
£19.00 / posted £23.00



Box 20 collected £29.00 /  
posted £33.00

**TO ORDER:** Call/text Debra on 07964 339739

[debra@whitehyacinthcakes.co.uk](mailto:debra@whitehyacinthcakes.co.uk)

For postal orders visit: [www.letterboxbrownies.co.uk](http://www.letterboxbrownies.co.uk)

Collection from 29 Brindley Way, Fenny Compton, CV47 2ES

## Local Pilates & stretch classes

with *Alison*



### **Mondays**

9.15-10.00am - Active Weights

at Oxhill Barns, Oxhill

18.00- 19.00 - Freedom to Move

19.15-20.15pm - Freedom to Move

A blended fusion of balance, strength,  
coordination, and flexibility

at Tysae Village Hall

### **Wednesdays**

9.15-10.10 - Pilates for Improvers

10.20-11.15 - The Pilates Practice

at Oxhill Barns, Oxhill

### **Thursdays**

9.00 - 10.00 - The Pilates Practice

10.10 - 11.00 - The Pilates Practice

at Shenington Village Hall

**First Saturday of  
the month**

*Trigger Point  
Pilates ~  
workshops*

**TO BOOK EMAIL:** [alison@alisonmarcuse-harris.co.uk](mailto:alison@alisonmarcuse-harris.co.uk)

[www.alisonmarcuse-harris.co.uk/classes](http://www.alisonmarcuse-harris.co.uk/classes)

# The Therapy Rooms at the Old Fire Station



High quality and affordable private physiotherapy in the heart of Tysoe at The Old Fire Station.

Musculoskeletal rehabilitation, sports massage and acupuncture with **Sarah Paterson and Glynn Alderman**, highly experienced Chartered Physiotherapists.

Book your clinic appointment on 07947028454 or [purephysiopractice@outlook.com](mailto:purephysiopractice@outlook.com)

Visit our website to find out more about prices and conditions treated at [www.purephysiopractice.co.uk](http://www.purephysiopractice.co.uk)

We are registered with some insurance companies including AXA PPP & Aviva

## MILLIE ELY MASSAGE THERAPY

Offering high quality sports massage, deep tissue and pregnancy massage at The Old Fire Station, Tysoe.

Whether you've sustained an injury, you've got a few aches and pains or simply in need of some pure relaxation, I'm here to help.

TO SEE TREATMENT PRICES, FIND OUT MORE OR TO BOOK VISIT

[WWW.MILLIEELYMASSTHERAPY.COM](http://WWW.MILLIEELYMASSTHERAPY.COM)  
EMAIL: [bookings@millieelymassage.com](mailto:bookings@millieelymassage.com)



For all your foot health needs

[www.purepodiatryclinic.co.uk](http://www.purepodiatryclinic.co.uk)

**Kate Kirby MRCPod**

HCPC registered podiatrist with over 16 years' experience.

Diabetes care, corns, callus, ingrown toenails, nail surgery, verrucae, musculoskeletal conditions, biomechanical assessments, orthotic prescription and so much more.

All treated with care, compassion, and knowledge.

Find out how I can help get your feet in tip top shape by calling 07843 154 532 or email [info@purepodiatryclinic.co.uk](mailto:info@purepodiatryclinic.co.uk)



**Customer Satisfaction | Quality Repairs | Affordable Prices | Dealer Level Quality**

# 01295 738 431

**Servicing | Diagnostics | Exhausts | Brakes | Repairs | Tyres  
Wheel Alignment | Batteries | Mot | Health checks | Clutches**

**Unit 18 Sugarswell Business Park  
Shenington  
Banbury  
OX15 6HW**

**[mbvehicleservices@outlook.com](mailto:mbvehicleservices@outlook.com)**

**Knitting-Jennie:**  
Inspired by Fair Isle



Jennie Ann Rake creates and hand knits Fair Isle themed garments and accessories.  
Commissions welcome.

Her range can be viewed on Facebook @  
Knitting-Jennie: Inspired by Fair Isle  
Enquiries to: [jennierake@gmail.com](mailto:jennierake@gmail.com) or  
01295 688335

**BEGINNERS OIL  
PAINTING CLASSES**

Every Friday 9.30 - 12.30  
Sibford Village Hall

1st Saturday Monthly  
9.30 - 12.30

Shutford Village Hall

Email:  
[nvfletcher@btinternet.com](mailto:nvfletcher@btinternet.com)

Tel: 07792657248

website:  
[nigelfletcher.co.uk](http://nigelfletcher.co.uk)



**K. G. Brooks Electrical Ltd**  
Local family run business  
Napit registered  
07976677997  
01295680738  
[KBrooks55@btinternet.com](mailto:KBrooks55@btinternet.com)



**Feldon Flooring**

**Carpet & Floor Coverings**  
**Supplied & Fitted**  
**Carpet Cleaning**

**Terry Goodman**  
**Ben Goodman**

T: 01295 680871

M: 07772 964 691

M: 07837 044151

E: [sales@feldonflooring.com](mailto:sales@feldonflooring.com)



**Tim Clarke  
Performance Coaching**

**Private Tuition Available  
Friendly teacher  
online or face to face tuition  
25 years as a qualified teacher  
DBS check and references  
11 plus  
GCSE Maths and English  
A level Maths  
Tim Clarke  
07984 140739 or 01295 678676  
clarke.tutoring@btinternet.com  
www.clarketutoring.com**

**THE  
TRACK HOUSE**



**BESPOKE QUALITY CURTAINS**  
Large Selection of Designer Fabrics

**POLES & TRACKS**  
Pole Measuring & Fitting Service  
Wooden · Metal · Bent for Angled Windows · Plastic  
Corded & Uncorded

**BLINDS**  
Roller · Roman · Velux · Panel · Woodslat · Venetian · Vertical

**www.trackhouse.co.uk**  
E: info@trackhouse.co.uk  
Tel: 01608 682001

**SHOWROOM**  
Unit 24  
Blackwell Business Park  
Blackwell  
Shipston-on-Stour  
Warwickshire · CV36 4PE




***Jazz Band available for  
local private events***

Mainstream / Bebop / Ballads

Contact Paul & Heather on 01295 688376

email: talkdementia.uk@gmail.com

We fundraise for:  talkdementia



**New installations  
Maintenance, Repairs  
and Upgrades  
All works undertaken  
Domestic, Commercial  
or Industrial  
Car Charging equipment  
installation specialists**

Call Craig on

**07809 741236  
01295 550618**



info@ccelectrics.com  
www.ccelectrics.com  
Middleton Cheney based

Celebrating 70 Years  
1952-2022

## The Forge Garage (Brailes) Ltd

Your local, family-run garage.

MOT's, Servicing, Air Conditioning, Diagnostics and In-Depth Repair Work

Pump attended fuel station also selling Calor gas, kindling, coal, BBQ coal  
We're here to help so please contact us today on 01608 685247 if you have any questions  
about your vehicle, or for a free no-obligation quote.



<https://www.theforgegarage.co.uk/>  
Telephone: 01608 685247;  
Email: [enquiries@theforgegarage.co.uk](mailto:enquiries@theforgegarage.co.uk)



## P. H. GOODMAN & SON LTD

CARPET AND FLOORING SPECIALISTS

Established 1963

**Telephone:** 01295 680 318 / 277 326

**Email:** [goodmancarpets@gmail.com](mailto:goodmancarpets@gmail.com)



national institute of carpet & floorlayers

Lewis Goodman  
Howard Goodman

*"Both optimists and pessimists contribute to society. The optimist invents and aeroplane, the pessimist the parachute."*

George Bernard Shaw



Generations of Care

# R. Locke & Son

Independent Family Funeral Directors – Est 1853

Caution Corner

**BRAILES**

OX15 5AZ

t: (01608) 685274

Southam Street

**KINETON**

CV35 0JN

t: (01926) 640386

No. 6 The Precinct

**WELLESBOURNE**

CV35 9NL

t: (01789) 840744

For more information about our services, to view our funeral announcements and online donations, please visit

**[www.rlockeandson.co.uk](http://www.rlockeandson.co.uk)**



**Golden Charter**   
Smart Planning for Later Life

## TYSOE PHONE BOOK

District Councillor	Malcolm Littlewood	07514 951 174
Lunch Club	Nicola Rexton	01295 680 058
NGS Open Gardens	Julia Sewell	01295 680 234
Parish Clerk	Charmaine Swift	parish.clerk@tysoe.org.uk
Police, Safer Neighbourhood Team, Shipston		01789 444 670
Poppy Appeal	David Sewell	01295 680316
Post Office	Jacqui Franklin	01295 680632
Shipston Link	David Sewell	01295 680 316
St Mary's Church	Rev'd George Heighton	01295 680 201
Talk Dementia	Paul Dowler	01295 688 376
Tennis Club	Carol Spencer	01295 680 659
Tysoe CofE Primary School	Paige Allister	01295 680 244

Tysoe Children's Group	Yvonne Dillon	01295 680 624
Tysoe Bowls Club	Phil Short	01295 680 732
Tysoe Flower Show	Steve Allen	07808 633 155
Tysoe Heritage Research Group (THRG)		thrg.info@gmail.com
Tysoe Rainbows	Diane Gibbs	tysoerainbows@hotmail.com
Tysoe Social Club		01295 680 627
Tysoe Surgery	Dr Raj Kanwar	01295 680 220
Tysoe Utility Trust Grants	Yvonne Dillon	01295 680 567
Tysoe United FC Adults	Gawain Hyde	07891 858847
Tysoe United FC	Juniors Stewart Lay	07870 851475
Tysoe Wildlife	Rosemary	01295 680 127 Shirley 680 793
Village Hall Bookings	Jacqueline Franklin	07816 403798
Warwickshire County Cllor	Chris Mills	07966 133607
Women's Institute	Christine Harrop	01295 780 765
WOT2 Grow Orchard	Miranda Forrester	01295 680 265



# Sun Rising

## Natural Burial Ground

and Nature Reserve, Lower Tysoe

A place of deep peace where loved ones can be laid to rest in growing woodland and wildflower meadows. All are welcome at this beautifully managed site.

01295 688488  
sunrising.co.uk



# RED HORSE VALE



Red Horse Vale is a long established, family run fuel distributor. We have been supplying homes and farms with fuel since 1965. During that time we have never changed our focus or philosophy which is to provide a superior and personal service.



**HEATING OIL • RED & WHITE DIESEL • LOGS • COAL  
WOOD PELLETS • KINDLING • COMPOST • TIMBER &  
SLEEPERS • MANURE • TOP SOIL • GARDEN TOOLS  
PET FEED • HORSE FEED • BEDDING • EQUINE SUPPLIES**

From pick-up loads and transits of logs to bulk bags of building sand, top soil or aggregates- we have an impressive fleet of vehicles to service your delivery requirements.



## SHOP IN-STORE OR ONLINE

[www.redhorsevale.co.uk](http://www.redhorsevale.co.uk)



Opening hours  
Monday- Saturday  
8am- 5pm



Red Horse Vale, Windmill Farm, Banbury Road (A422),  
Oxhill, Warwickshire, CV35 0RP  
01926 642 832

