

TYSOE & DISTRICT RECORD

FEBRUARY 2025

Issue No: 853

Annual Subscription £5



Price **£1**



Photos by Robert Mahoney taken in his garden at Lower Tysoe. Top row: Robin & Blue Tit, Greater Spotted Woodpecker, Middle: Blue Tit & Long-tailed Tit, Bottom: Great Tits.

In this issue you can read about:

- **A New Year Detox 'The Salt Path', now a film**
- **Hayley's Health Tips for the New Year**
- **Looking after our Garden Birds with Rosemary**
- **Tysoe's place at the dawn of Motor Sport . . .**

HAPPY NEW YEAR 2025

Welcome to our first issue of 2025! The year has got off to a stormy start weather-wise, but we hope our reflections on Christmas Past (see pages 4-7) help to create a warm glow inside. Why not kick-start some good habits by checking out Hayley's 'Healthy Tips' on page 8? She says keeping a positive mindset is key.

This January start the year with an empty jar. Each week add a note with a good thing that happened.

On New Year's Eve empty the jar and read about the amazing year you had.



If you are still feeling a bit blue, then let Carol take you on the train ride cross Australia (see page 9). There's plenty to look forward to in the year ahead as the Village Hall Committee brings us the National Theatre's LIVE and pre-recorded productions. We are 'earnestly' entreated to join them for an evening with Oscar Wilde on 23rd February (see page 21).

We have some exciting plans of our own to share with you as we become more web-savvy, but you will need to wait until the March issue for the Big Reveal! Meanwhile, the Record Team looks forward to reporting on many more fascinating and fun events in the months to come.

The Editor

THE RECORD TEAM	GET IN TOUCH
<p>EDITOR: Shirley Cherry Orchard House, Back Lane, Tysoe Tel: 01295 680793</p> <p>ED ASSISTANT - Helen Keayes</p> <p>ADVERTISING: Ben Viollet advertising.tysoerecord@gmail.com</p> <p>SOCIAL MEDIA: Emma Tompkins Facebook: @Tysoe & District Record</p> <p>TREASURER & SUBSCRIPTIONS: Carol Clark</p>	<p>DISTRIBUTION COORDINATOR: Jude Canning</p> <p>Email your copy to tysoerecord@gmail.com</p> <p>Message us on Facebook @tysoerecord Hard copy to Shirley at Orchard House, Back Lane or Carol at 16 Windmill Way.</p> <p>Next issue: March 2025 Copy deadline: Monday 17th February 2025</p>

A NEW YEAR DETOX!

You might appreciate a detox, following the excesses of Christmas.

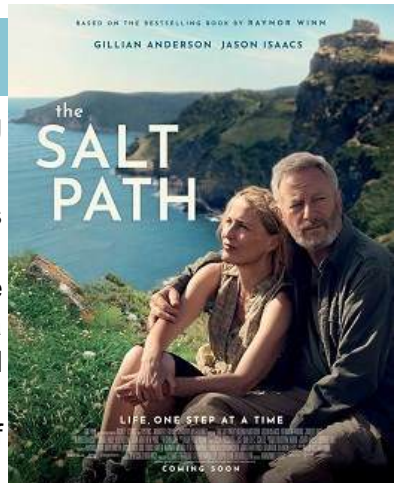
A new film is coming into the cinemas soon, it's called 'The Salt Path', and some of you may also have read the book on which it's based. It describes a mad journey that a couple take around the south-west coast-path in Britain. As any of you who have walked even part of that path knows, it takes ages ...

because it just keeps going up and down, and round and round... oh and then up again.. it is really steep in places.

But the other reason it was mad, was because the two people doing the journey were, shall we say, getting on a bit, they had NO money, and one of them was really quite sick. It wasn't in a sense what they should have been doing, it was completely bonkers, and yet, it turned out to be exactly what they should have been doing.

I only realised, months after reading the book, that of course it wasn't just a 'salt path' because it was by the sea, it was because they cried salty tears, regularly. They experienced a walk through the darkness of poverty, age and sickness, and they gradually understood what life for them was all about. There may have been a lot that was wrong, but, for Raynor Winn and her husband, that journey completely changed their perspective, and in so doing it brought them everything. They understood really deeply from the impossible as well as the amazing parts of that journey that Life was more than having a house, a steady income, and even all of your health. It was about walking your good, bad and ugly, and receiving all the good around even if it doesn't 'pay the way'.

This is a deeply revolutionary read and experience, I hope you can get to see the film and/or read the book!



Rev'd Susan Bowden-Pickstock

TYSOE RISES TO THE CHRISTMAS CHALLENGE!



On Christmas Day in the morning these dedicated runners turned out for the 'Circuit de Tysoe Santa Run', no doubt to make room for the feasting to follow! Meanwhile Tysoe Social Club did the village proud with this spectacular Christmas tree and hosting the tree lighting event.



DID YOU SEE TYSOE'S ILLUMINATIONS?



SHERWOOD FOREST COMES TO TYSOE



Seeing the pantomime 'Robin Hood' performed at the Village Hall on the afternoon of Sunday 29th December by 'The Caramaba Players' was a lovely way to round off Christmas.

The Hall was packed with families, and fun loving adults, who all joined in the banter with the actors playing Robin Hood, Maid Marion etc. We all enjoyed 'booing' the dastardly Sheriff of Nottingham and groaning at some predictable jokes, but we applauded the simple but effective change of scenery from Sherwood Forest to The Castle.

The ice creams and drinks made it all the more enjoyable and I'm already looking forward to next year's Christmas Panto - "Oh Yes I Am"!

Helen Keayes





GAMES NIGHT AT TYSOE SOCIAL CLUB

The festivities continued at the Social Club as on the 27th December we had an evening of Blankety Blank, with Play Your Cards Right peppered between rounds for good measure.

It was a wonderful turnout with both younger and older participants, enjoying these games for a chance to win prizes. The games followed the format of said shows from TV. Fun for all the family!

Everyone who wished to join in were given a raffle number which were drawn out to be either contestants or the panellists, potentially being called out multiple times throughout the evening.

Lots of laughter ensued and there were even burgers available for those attending too, provided by our very own 'Catering Angel', Jenny Brown. I had a great time hosting it and would like to thank again all those for coming and supporting.

If you'd like to join us for the next one, find the Social Club on social media or here in

The Record for upcoming events including more games night hosted by yours truly!

New Year's Eve saw Live Music from 'DABB4+1' with a complimentary glass of fizz for everyone and free entry.



Josh Welsby

Creatures at Christmas



'Creatures at Christmas' was the theme for St Mary's Advent activities:



In the churchyard boards were erected which displayed Christmas cards of eight creatures, designed by Jessica Presland, plus some interesting facts and a poem.

For our 'Creatures at Christmas Quiz' models and toys of all the eight animals were hidden around the church by Chris Locke who made up some cunning clues to find them.

On Monday there was an action-packed Children's Workshop which featured a 'Bird Café' with different types of bird food. The children had to match the food to the bird (See p 12-13). They listened to different bird calls, made animal masks and sang songs.

At the Crib Service on Christmas Eve, the children performed the poem, 'Christmas All Around', and sang carols about the creatures, while Rev'd Susan looked at the animals in the Christmas Story and said how God cares for all nature and wildlife around us.



Thanks to everyone for bringing 'Creatures at Christmas' to life! To Josh for his wonderful illustration. Our leaders: Chris, Susan, Gill, Rosemary, Rowena, Sally, Shirley and Roland; to Colin and John for putting up the nativity, Tysoe CE School for making the wonderful doves and the 'Creatures' banner, to Chris and Lucy Locke for providing refreshments . . . and finally to Alex for bringing her Herdwick sheep.



Your efforts made Advent extra special. It was a joy to see such a packed church for the Crib Service. The Editor

Sponsored by Sy Mary's Church, Tysoe Wildlife and the Tysoe Record.

HEALTHY TIPS FOR THE NEW YEAR: FOCUS ON ADDING, NOT RESTRICTING

As we embrace a new year, let's shift the focus from what we "shouldn't" do to what we can add to our lives to make them richer and healthier. Building a positive mindset around health can create lasting habits that feel empowering rather than restrictive. Here are a few ideas to get started:

1. Add More Colour to Your Plate

Incorporate a rainbow of fruits and vegetables into your meals. Each colour offers unique vitamins, minerals, and antioxidants that nourish your body. Think vibrant salads, roasted veggies, or a colourful smoothie bowl!

2. Drink More Water

Instead of focusing on cutting out sugary drinks, challenge yourself to drink more water throughout the day. Add a splash of lemon, cucumber, or mint to make it enjoyable and refreshing.

3. Include Movement You Love

Rather than forcing yourself to do exercises you dislike, find activities that bring you joy. Dancing, hiking, gardening, or even a brisk walk with a friend can be just as beneficial for your body and soul.

4. Make Time for Connection

Add quality time with loved ones to your calendar. Whether it's a phone call, a coffee date, or simply spending an evening with family, nurturing relationships is essential for mental health.

5. Enhance Your Sleep Routine

Focus on creating a bedtime ritual to improve sleep quality. Add calming activities like reading, meditating, or sipping herbal tea before bed to wind down.

6. Practice Gratitude Daily

Instead of dwelling on what you lack, add a gratitude practice to your day. Write down three things you're thankful for – it's a small habit with huge benefits for your mental health.

This year let's focus on abundance – on adding things that make us feel healthier, stronger, and happier.

Hayley Tucker, www.hayleytuckerhealth.co.uk @hayleytuckerhealth

CROSSING AUSTRALIA BY TRAIN



Last October I visited Australia to catch up with family. However, rather than fly to Sydney, I decided to take the Indian Pacific train service from Perth on the west coast to Sydney on the east, a distance of just over 2000 miles taking 4 days and three nights. The route includes the world's longest stretch of straight track, all 297 miles of it across the remote Nullarbor Plain. A lot of it is single track too, requiring stopping in passing loops to allow freight trains going the other way to pass.

Although Sydney and Perth have been connected by rail since 1917, different sections of the route had been built with different track gauges, and it wasn't until 1969 that a continuous standard gauge line was established. The first 'through' passenger train journey from Sydney to Perth was made by the inaugural Indian Pacific service in February 1970 and the rolling stock in use today is, as far as I can tell, the original although refurbished and upgraded. Each train comprises about 30 carriages and usually two locomotives.

Four off-train excursions were included – Kalgoorlie at 10:00pm on the first day; Cook, an almost deserted township in the middle of nowhere, (the stop was purely to take on water); half a day in Adelaide, and half a day in the Blue Mountains west of Sydney on the last day.

One of the most entertaining parts of the trip was watching the waiter with a full tray of drinks balanced on one hand, navigating from the bar to the dining car – passing two sliding doors which seemed determined to close on the waiter or on his tray, the train would choose that very same moment to cross over points or a joint in the track, causing one carriage to rock violently one way, and the other carriage the other way. Not a drop was spilt!

I'm delighted to report the same number of passengers arrived as departed, there were no Agatha Christie murder mysteries on board. Tickets please!

Carol Clark



A MEETING OF TWO HALVES

The members met for their first meeting of the New Year on the 8th January and were both entertained and educated by Steven Bruce, Auctioneer, who shared his many experiences of buying and selling items found at house clearances, antique fairs and car boot sales. Members had been invited to bring along their own items for Steven to value, the most surprising was a pair of wooden bookends bought for £1 valued by Steven at several hundred pounds.

Steven shared some tips when buying or selling:

- If you see something you like purchase it then and there or you might find somebody else will
- Beware of fakes, there are a lot around
- If selling, go to a reputable valuer or dealer
- If selling gold or other precious metal contact a bullion dealer.

As well as imparting some sound advice, Steven shared many humorous experiences he's encountered during his many years of working within the field of antiques.

New members always made very welcome, come along to Tysoe Village Hall on the 1st Wednesday of the month and join us. At our next meeting on February 5th Jules Mould will be talking to us about finding our Happy Place at Meadow Fields Luxury Glamping!

Linda Johnson

Follow us on Facebook, email tysoewi1917@yahoo.com or visit www.tysoewi.com

Friday 28th February from 10:30 am to 12:00 noon Kineton Village Hall.

Carers4Carers
Finding support through supporting each other

Come and meet other local carers for refreshments, conversation and support. Bring your loved ones! Speaker to be confirmed. We look forward to welcoming you there! For help with transport, contact Gillian on 07947 893504, email kcarers4carers@gmail.com.

www.carers4carersonthefosse.org.uk

BRAILES GARDENING CLUB - A REVIEW OF 2024

A wide variety of talks on gardening, garden visits and social events was enjoyed by members of Brailes Gardening Club during 2024.

Our first talk after the January AGM and fish and chip supper was given in February by the owner of Kiftsgate Court Garden, Anne Chambers. The following month, a talk on the serious topic of the subtle art and precise science of pruning turned



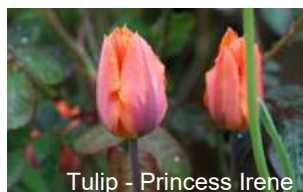
out to be an evening of great entertainment when many closely held views on pruning were systematically debunked. We were then treated to a timely talk in April on a Spring visit to Japan's gardens and countryside.



A visit to two gardens in Northamptonshire was followed in June by a social event in the village hall and, in July, there was a coach trip to visit the spectacular garden at Wollerton Old Hall in Shropshire.

The second half of the programme of garden talks saw Mandy Bradshaw, photojournalist, take us beyond the garden gate to visit various Cotswold gardens, followed by a talk on designing a low maintenance border by Lucy Hartley, garden designer. In between, we made our final garden visit of the year to White Hill Farm near Burford.

Our year ended with a barnstorming talk and demonstration on planting pots for winter interest and spring joy given by Harriet Rycroft, which revived interest in container planting for many members.



Tulip - Princess Irene
Image Katharine Hersee

Brailes Gardening Club meets at Brailes Village Hall when we are not out visiting. Our next meeting of 2025 will be "Gardeners Question Time" on 20th February, doors open at 7pm for the 7.30pm meeting when the programme of talks and activities for 2025 will be available. Membership is open to all and is just £10 a year.

Vic Lee

Email: victorlee777@btinternet.com

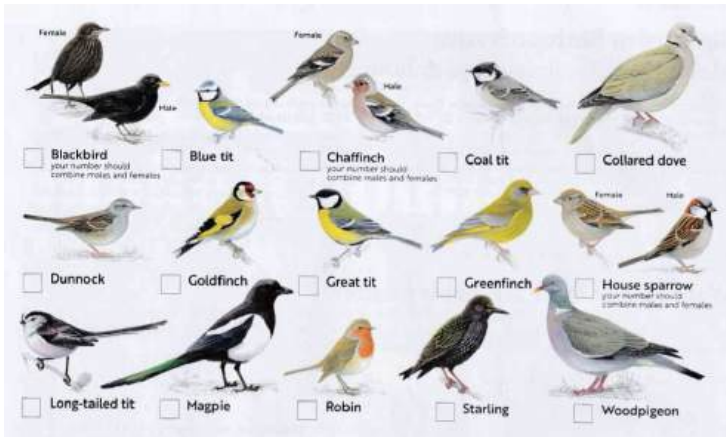
MAKING SPACE FOR NATURE—GARDEN BIRDS



About 20 children joined us in the church on 23rd December for a 'Creatures at Christmas' workshop. One of the topics was feeding wild birds during the winter. This was timely as 2025's RSPB Big Garden Bird Watch will take place between 24th and 26th January. You can take part by recording the birds visiting your garden during one hour and submitting your results to the RSPB online or by post. Further details are on the RSPB website.

It's Big Garden Birdwatch time

Last year's top ten species nationally were: 1. house sparrow; 2. blue tit; 3. starling; 4. wood pigeon; 5. blackbird; 6. robin; 7. great tit; 8. goldfinch; 9. magpie; 10. long-tailed tit. Some of these



species are doing well in gardens and have grown in numbers, the goldfinch is a good example. Although they are two of the most numerous species, the house sparrow and the starling

are now red-listed as species of conservation concern. In the 1990s, it became clear that both species were undergoing rapid declines (greater than 50% over 25 years) in Britain.

House sparrows nest in colonies, generally associated with buildings. They have a mixed diet, and in the summer they forage for insects. Starlings feed mainly on soil invertebrates, but also visit garden feeders. They often nest in the eaves of houses. The reasons for the declines in both species can be broadly attributed to a shortage of food and a loss of suitable habitat, including nest sites. Availability of invertebrate food for chicks in the summer may be a key factor. Both species can be seen locally and we can certainly help them by feeding them in winter. It's also important to do all we can to support invertebrate populations, and there is the opportunity to provide artificial nest boxes, which both species use readily.

Rosemary Collier



2025 NEW YEAR HONOURS

The Tysoe & District Record wishes to congratulate Professor Rosemary Collier who has been awarded an Officer of the Order of the British Empire (OBE) for her work in horticultural science and pest control technology at the University of Warwick. Away from her many contributions to professional horticulture and the food industry, Rosemary devotes what spare time she has to helping promote conservation and biodiversity around south Warwickshire.

She gives freely of her professional knowledge to voluntary groups: setting up SWAN for Wildlife, supporting Tysoe Wildlife and she has sat on the Warwickshire, Coventry and Solihull Local Nature Partnership since its establishment. She writes for the Tysoe Record and was a leader of 'Creatures at Christmas' at St Mary's.



The Editor

TYSOE'S PLACE AT THE DAWN OF MOTOR SPORT SUN RISING HILL-CLIMB 1903-04



Recent research by THRG has unearthed Tysoe's role in the very early history of British motorsport 120 years ago. In 1903 the newly-formed Midland Automobile Club identified Sun Rising Hill as one of the steepest hills in the region and ran three competitive hill-climbs there in 1903-04.

The timed hill climbs ran over 1030 yards on today's A422 from roughly the junction with the Tysoe turning to the top of the hill by Sun Rising House. Competitors had to stop just below the sharp hairpin above Rupert Cottage to perform a standing start, as a test of their engine, brakes and clutch control. A second restart had to be completed on the upper portion of the hill too.

Somewhat surprising from today's perspective is that cars had to run with a full compliment of passengers, plus a full toolkit. 20 cars attempted the ascent in July 1903, with 29 competitors entering in the July 1904 event. Cecil Edge won both events in his 20hp Napier, accompanied by his mistress Miss Dorothy Levitt - plus her dog!

Napier were the leading sports racing cars of the day, something akin to McLaren today, and the Sun Rising events with C.F. Edge did much to cement their reputation at the time. Other competitors included Herbert Austin and the Hon. C.S Rolls (of Rolls-Royce), with local car makers such as Daimler, Lanchester and Wolseley all taking part to promote their wares.



Midland Automobile Club Hill Climb.—General view of the surrounding country as seen from the first stopping point on the Hill. A detachment of the local constabulary before taking up their positions on the course. This is the very dangerous corner where the accident on the next day took place.

Not all locals approved, however: “A person who signs himself ‘Esq.’, resident in the locality, who does not approve of motor cars, signified his opinions by causing his manure carts to be driven up and down the hill most of the afternoon, although no one was any the worse, though he caused his horses some needless exertion” reported ‘The Autocar’ in July 1904.

As a result of this and over-zealous scrutiny by the local police force, the MAC abandoned Sun Rising and sought their own track on private land. In 1905 they ran their first season hill-climb at Shelsley Walsh in Worcestershire. This track has been in constant use by the MAC ever since and is thus the oldest motorsport venue in the UK.

Period photos in ‘The Autocar’ confirm that the lower part of the course below Rupert Cottage was steeper than today and the road was reprofiled in later years to make it more manageable for modern traffic. Rupert Cottage had just been built in 1903 and was used as the HQ for the weekend events.

So, Tysoe has a valid claim in Edwardian motorsport history. But who was the objecting farmer?



At the first stop: This illustration clearly shows the first sharp bend in the course.

Nick Hull, THRG



During Advent Rev George invited everyone to join in a **'Reverse Advent Calendar'** i.e. saving an item of food for the 24 days of Advent to give to the Shipston Food Bank. We would like to thank you for your excellent response. Tysoe Primary School joined in and we also had a donation from the Dementia Café when their raffle winner donated their hamper. On Saturday 21st December our car was full of tinned goods, mince pies, chocolate, biscuits to take to Shipston. It is a good feeling to know that people are willing to share what they have to ensure others have as good a Christmas too.

The Foodbank is open to anyone who is in need of help. It serves, not only Shipston, but the surrounding villages. There is a box at the back of church for any items you may wish to donate. These are delivered each week to the Shipston Food Bank. If you can purchase and donate just one item from your shopping, it does make a difference!

Drina Heighton

Holly Tree Fayre St Mary's Church 14th December



Another successful Holly Tree Fayre attracted a good crowd, intent on last minute Christmas shopping from the many stalls of local crafts. Musical entertainment was provided by Tysoe's own Merribells handbell band and the Brailes Singers, led by Maddy Evans. Homemade soup and Rev George's pork baps added to the refreshments headed up by Gill Dawkins and team. A fabulous raffle was organised by Chris Locke and Jenny Tongue and Matt Harcourt and family provided free fun and games for the children. Around £1,300 was raised, in support of Crisis at Christmas and church funds. Many thanks to all involved and all who came.

Jennie Rake



ST. MARY'S CHURCH TUESDAY MORNING

18th FEBRUARY 2025

9am - 12 noon. Donations to charity

Includes *STAY AND PLAY* for mums and tots!

NOTES FROM ST MARY'S CHURCH

The Presentation of Christ in the Temple (also known as Candlemas) will be celebrated at St Mary's on Sunday 2nd February. There will be

plenty of candles at the Family Service at 11am, which will include Christingles for the children. Candles symbolise the light of Christ bringing hope to people in darkness. Please come and invite people you know, especially children and families. We are hoping that pupils from Tysoe school will be with us to help lead this service.

The account of the Presentation is found in Luke 2:22–40. There are two new people in the story: Simeon and Anna. Simeon is convinced that he will not die until he has seen the Messiah (or Christ). Anna is

very old, a prophet, who spends all her time in the Temple. They both recognise someone very special in the baby Jesus. Simeon's response to Jesus is captured in the poem which has become known as the Song of Simeon, the Nunc Dimittis. You may have heard it, or read it or, if you're as old as me, you may remember the television series "Tinker, Tailor, Soldier, Spy"; a very haunting version was played at the end of each episode. The scene is captured in a painting by Rembrandt, and it shows Jesus in the arms of



Simeon, the old man. Google "Rembrandt Presentation". The picture is very dark, but at the centre is something wonderful - (see above). The light of Jesus Christ which can never be extinguished by any gloom shines out and is reflected on the faces of those who surround Him. May His light shine upon you now and always.

God Bless,

George

Revd George Heighton

Email revgeorgeh@outlook.com, Telephone 01295 680 201



Tysoe Social Club

For those wishing to join for the New Year, membership of the Social Club is £20. It includes some great benefits such as: reduced cost on drinks, access to the Thrift Savings Club, and the chance to use all of our club amenities such as snooker, darts, dominoes. We are open to everyone, non-members and guests are very welcome.

In February we have the following upcoming events:

- ☺ **Saturday 1 Feb** - New event for the club: 'Singo Bingo' - Singo is a game that combines bingo and music, where players match song titles to tiles on a bingo card.
- ☺ **Saturday 8 Feb** - Holly Perkins performs live, an acoustic set of popular covers
- ☺ **Wednesday 12 Feb** - Sourdough Pizza to eat in or takeaway courtesy of Catering Angel
- ☺ **Saturday 22 Feb** - Local Band 'Tres Hombres' play live - soft rock and Blues covers

Lauren, TSC Secretary

Tysoe Walled Kitchen Garden 2024



Thank you to everyone who bought our organically grown fruit, vegetables and plants from our trolley. We raised over £600 and have given it this year to; Tysoe Children's Group; Shipston Food Bank; National Garden Scheme (medical charities); Carers4Carers and Ilmington Water Testing Group.

The trolley will soon be at the bottom of the drive, subject to weather conditions, when we have excess fruit and vegetables and plants for sale. Please support us in 2025 so we can support more local groups.

www.twkg.co.uk



TYSOE VILLAGE HALL NEWS

As the curtain dropped at the pantomime we paused to reflect upon 2024.

During the year we organised and hosted 22 events, benefiting not only hall fundraising but also our community through good causes such as Muscular Dystrophy, Mary's Meals, Roland & Shirley's African Adventure fundraiser and the Royal British Legion.

We laughed (and sometimes wept quietly) at twelve films, watched by over 400 people. We enjoyed performances by the Royal Ballet, ate lovely Thai food, sang and danced to live music and enjoyed food and crafts created by exceptionally talented local people. Of particular note was Remembrance Sunday, where with the WI and many other contributors we paid our respects to those that gave so much whilst honouring David Sewell for his decades-long contribution.

2025 has begun in earnest and regular visitors will have noticed the freshly painted store rooms and gents toilet areas, just part of the regular maintenance our busy hall deserves.

The calendar of events is already well formed, guided by feedback and suggestions from our visitors. Many said they enjoyed theatre, but with the ever-increasing cost of tickets and travel prefer to stay closer to home. We are delighted to announce we are now one of just 20 village halls to be able to screen pre-recorded National Theatre productions, with Oscar Wilde's *The Importance of Being Earnest* showing on 23rd February. For those that also enjoy truly LIVE theatre, a wonderful stage production of *Into The Breach*, shows on 15th February.

There isn't room to go into detail about all the plans for 2025. The hall website carries full information, including how to register for priority ticketing through our email newsletter, or see Jacqui at the Post Office.

Thank you for 2024. We look forward to seeing you in 2025.

Ben Viollet

Chair, Tysoe Village Hall Trust

www.tysoevillagehall.org.uk

FEB 2025 DIARY DATES	BINS	 Food waste (food waste caddy)	 Recycling (blue-lidded bin)	 Refuse (grey bin)	 Garden waste (green bin)
	07/02/2025	✓		✓	
	14/02/2025	✓	✓		✓
	21/02/2025	✓			
	28/02/2025	✓	✓	✓	✓

What	Where	When	Contact
Coffee Morning (free)	St Mary's Church	Tuesday 18 Feb 9am - 12noon	Drina Heighton (01295) 680201
Craft & Laugh	Village Hall (McNulty)	Wednesday 12, 19, 26 Feb	Linda Johnson (01295) 680585
Dance & exercise class (free)	Village Hall	Every Thursday 10:30am - 11:30am	Eileen Mann (01295) 680921
Lunch Club	Village Hall	Friday 7 Feb 1pm	Nicola Rexton (01295) 680058
Mobile Library	Outside Village Hall	Tuesday 4 Feb 2pm	https:// apps.warwickshire.gov.uk/ MobileLibraries/ library_routes/118
Parish Council Meeting	Village Hall (McNulty Room)	Monday 10 Feb 7.30pm	Charmaine Swift parish.clerk@tysoe.org.uk
Pickle Ball	Village Hall	Every Thursday 7.15 - 9.15pm	www.tysoevillagehall.org.uk/ page/pickleball
Tysoe Dementia Café	Village Hall	Every Friday 10am-12noon	Paul & Heather Dowler (01295) 688376
Tysoe Tots	Tysoe Primary School	Every Wednesday 9:30am - 11:30am	Rowena 07824 640902
Tysoe WI	Village Hall	Wednesday 5 Feb 7.30pm - 9pm	Christine Harrop (01295) 780765

Oscar Wilde's The Importance of Being Earnest



23rd February 2025 - doors open at 7pm
Booking HIGHLY recommended to avoid disappointment!
Post Office or www.tysoevillagehall.org.uk



Inspired by nature

Created by you at Upton House

17 - 21 February 2025 half term
11:00 - 14:00

Stories and rhymes, outdoor family trail and
make a mischievous magpie mask craft activity
£2 per child plus usual admission.

nationaltrust.org.uk/uptonhouse

© National Trust 2022. Registered Charity no. 2058946.
Photography © National Trust Images/Nick Upton





Tysoe Village Stores

Opening hours:
Mon-Sat: 09.00 – 19.00
Sun: 09.30 – 17.00
Tel: 01295 688333

We stock a wide variety of locally sourced products, including fresh bread and pastries, fruit and vegetables, Mabel's Milk, Fowlers cheeses, meat pies and ready meals, Gluten-free and vegetarian ranges. We now have a regular delivery from Barry the Butcher - ring us for any special orders by Wednesday and we'll have them ready for the weekend. Now offering a home delivery service for groceries, simply email us on mytysoeshop@gmail.com

Tea Room



We offer a wide range of hot teas and coffees, soft drinks, delicious homemade sandwiches, a variety of cakes, toasted teacakes, scones and other sweet treats. We look forward to welcoming you!

Opening times: Tuesday - Saturday 9am-3pm

Email: tysoetearoom@gmail.com for any enquires



Hi Tysoe and Happy New Year!

The Parish Council has been involved in a lot of issues over the past two months, mostly due to problems caused by the weather. Hopefully the worst of the bad weather is over. At January's meeting PC Hammond, Tysoe's Community Support Officer, came to speak about his work, the crime figures for Tysoe and what can be done to help stop crime in Tysoe. He advised that Tysoe's crime figures are low compared to many other villages.

Councillors discussed the consultations open for comments on both Ellen Badger Hospital Beds and the County Council's preparedness to move forward with local government reforms, as detailed by the Minister of State for Local Government and English Devolution. Further information on where to access the public consultation on Ellen Badger Hospital will be posted on the Tysoe Village Noticeboard Facebook page and tysoe.org.uk.

The budget and Precept for 2025/26 was agreed and a motion passed for the Clerk to submit Tysoe's Precept request. This year's Precept will rise by 5% in order to allow sufficient funds to cover our expected expenditure in 2025/26. Details will be posted on the Parish website shortly.

A lot of work has been carried out on trees and hedges around the village and yet more is planned. There is also further work to be done on the Children's Playground following Gareth Atwell's repairs to the wooden roundels and other play equipment.

We now have four working defibrillators in the village and two courses are being run in the village hall by Shipston First Responders for residents wishing to learn how to use them. Please contact Amanda Venables via email on amanda.venables@tysoe.org.uk if you would like to undergo training.

That's it for now.

Charmaine
parish.clerk@tysoe.org.uk



Tysoe Post Office

At the heart of the village
Serving the community

Established 1866

Post Office services (free banking, cash withdrawals, Euro's/travel money, phone top-ups).

Gifts (stockists of Gisela Graham, East of India, Salle Belle),
Cards and stationery. Local & imported flowers & plants.
Delivery local/nationwide.



Find us on Main Street
07816 403798



TYSOE TOTS

A free stay and play session for parents, grandparents or carers and their little charges!

Every Wednesday during school term time

9:30am – 11:30am

@Tysoe Primary School

Enter via the side gate, come down to the The Hive.

Call: Rowena 07824 640902



All weather woodland stay and play for babies, toddlers and preschoolers 0-5yrs



Weekday and weekend sessions
Birthday parties and private hire

Follow us @woodsandwellies  

Applecross Fields, Radway, Warwickshire
email: applecrossfields@gmail.com



WHAT A FANTASTIC RESULT!

December was a very busy month at Tysoe Children's Group. Firstly we had our annual raffle. We would like to



say a massive thank you to everyone who donated and sourced some amazing raffle prizes and also to everyone who purchased a ticket. Together you raised a fantastic £415. All monies will go to purchase resources to enhance the children's learning.

The Flames children put on a fantastic nativity performance. The children and staff worked so hard in the weeks leading up to nativity and we want to thank them for all their hard work. A big thank you to all the parents and grandparents who attended - it was lovely to see so many of you there!



Please Note that the next collection for our Bag2School will be on Tuesday 11th March 2025 at 9.00am We are happy to take your bags of unwanted clothing, bags, shoes, curtains, etc, (sorry no bric-a-brac toys or books) this all gets weighed and we are paid according to this weight.

Money raised will go into our charity fundraising account to support the children's group with the current fundraising project being the outdoor environment. As always we appreciate your support.

Team TCG



HELP GAYLE'S SWIMATHON!



Some of you may remember that Gayle Tompkins swam the equivalent of the English Channel a

couple of years ago, a total of 21 miles over 3 months. She is now swimming the equivalent of a marathon (26.2 miles) starting in February which she hopes to complete by June. "This is to raise funds for British Heart Foundation following the sudden loss of a very dear friend and colleague, Hayley Foster", said Gayle. "There are various fundraisers going on and my swimathon is one small part of a team effort over a year."

If you would like to sponsor her and/or see how she is doing you can scan the QR code or take a look at <https://www.justgiving.com/fundraising/gayle-tompkins>.



SUPPORTING CARRIERS OF HOPE



Our School Council is supporting Carriers of Hope this year and after a very successful Christmas Toy Drive, we were interested to learn more about the work they do. Recently, we welcomed Grandma Val from Carriers of Hope to our assembly. Grandma Val shared with the children about the important work Carriers of Hope do to support refugees across Coventry Diocese.



The children listened attentively and asked insightful questions. They are keen to be involved in more sessions with Carriers of Hope and learn more about their work. It was particularly pleasing to hear such complimentary words from our visitors about our children's attentive listening and exemplary behaviour.

To find out more about this local charity visit:
<https://carriersofhope.org.uk/>

Even the word "dementia" can be daunting...
but we believe it's better to get the practical advice
and emotional support you need as a family carer

Please visit one of our dementia friendly cafes locally

Tuesday from 10.30am - 12.30pm

Wednesday from 2pm - 4pm

Thursday from 10.30am - 12.30pm

Friday from 10am - 12 noon

1st Tuesday of each month
from 10.30am - 12.30pm



Shipston on Stour CV36 4QG

Wellesbourne Village Hall CV35 9NH

Moreton-in-Marsh GL56 0DS

Tysoe Village Hall CV35 0SE

Compton Verney House CV35 9HZ
(contact us for entrance tickets)

Google
talkdementia

Advice and support for carers of loved ones
living with dementia in South Warwickshire

Contact Paul and Heather Dowler
Phone 01295 688376
Email talkdementia.uk@gmail.com



FELINE FINALE

Tysoe Stray Cat Patrol can finally announce that after a hectic six months, with many highs and lows, the stray cat crisis has come to an end. We are left with two community cats in Middleton Close and a black cat last seen on the Oxhill Road; however, sightings are now sporadic. If he/she pops up in your garden, please call 07813 681478. Any food you could put out for it, or a warm box in a shed would be a wonderfully kind gesture should he/she appear.

Currently, we are not aware of any other stray cats in the village but if you have any concerns please call. You will see below that in November we were devastated when we lost three cats along the Shipston Fields road. Please spread the word. Especially to any farms from Tysoe to Brailes, Whatcote and Shipston. Not a day goes by that I don't think of them.

Beki Benjamin

HAVE YOU SEEN THESE CATS?



£200 Reward for any sightings on your property/farm along with assistance in helping us to recapture them.

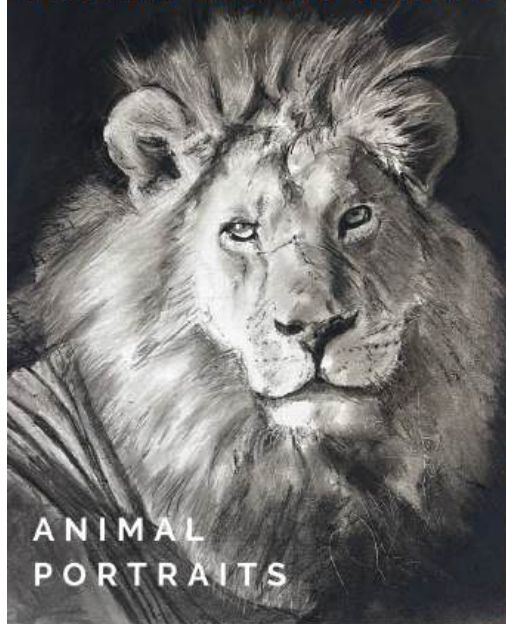
It's now been over two months since these three semi-feral cats escaped while being moved to their new outdoor home along the Shipston Fields road (2.5 miles from Upper Tysoe) and during this time the weather has not been kind. They will have sought shelter somewhere!

All have one clipped ear, they are micro-Chipped and neutered.

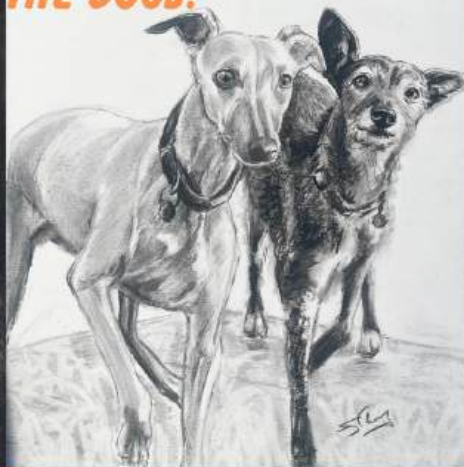
Please check barns, stables etc as they will be hungry.
It's a misconception that feral cats do not need feeding.

Please call Tysoe Stray Cat Patrol on 07813 681478 or email beki.butterbee@gmail.com

PUTTING THE CAT AMONG THE DOGS!



ANIMAL
PORTRAITS



COMMISSIONS IN CHARCOAL



Call Shirley 07900 221120
dogtasticportraits.co.uk

FEBRUARY EVENT

SECRET STUDIO SALE - 8th FEB

GRAB A BARGAIN!

Browse over 20 displays from local artists clearing their studios of seconds, one-offs, experimental & test pieces, supplies and surplus equipment

Wren Hall, School Lane, Wroxall, Warwickshire, CV35 7NF

10.00am - 4.00pm

www.pennyvarleyceramics.co.uk

5 Avon Avenue, Tysoe, Warwickshire, CV35 0SP

t: 01295 680700 m: 07486 452099 e: pennyvarleyceramics@hotmail.com



Penny Varley Ceramics
Original Creations in Clay

THE MAKING OF TYSOE: GRAVE TALES FROM THE CHURCHYARD (9) FROM HEAD TO FEET

As the weather gets colder this month we're coming indoors to look at a monument inside the church, (once located in the churchyard). St Mary's has two contrasting "effigies" i.e. memorials with full size sculpted figures. The grand one in the chancel to William Clarke (d. 1618) has a Latin inscription on a cast iron plaque proclaiming his patronage of St Mary's. Every letter "N" is reversed, probably because the casting process requires the mould to be a mirror image and the craftsman made a mistake, although there are other carved inscriptions with the same reversal, so maybe this was the custom in the 17th century.



Our focus is the second, intriguing effigy, relocated to a niche in the north aisle. It is what is known as a "semi-effigy," a type of monument which takes the form of a medieval grave slab with "portholes" showing just the face and feet. It is an uncommon form. In the 150+ medieval parish churches nearby there are about 24 medieval grave slabs and effigies, but only two are semi-effigies, one in Wardington and ours in Tysoe. While Tysoe's effigy shows the head and feet, Wardington's only depicts a priest's head with hands in prayer. The Wardington head also appears to be an afterthought, whereas Tysoe's head and feet are carefully framed. The weirdest semi-effigy however is in Lichfield Cathedral, where the head and feet are in stone boxes set 4 feet apart in the south aisle wall. Not far away is a box, partly obscured by a later column, with just the feet!

What lies behind these strange memorials may be the desire to personalise or animate the otherwise anonymous medieval grave slab, without the expense of the high-status display of a full body effigy. Or they may indicate a more spiritual emphasis on the head, eyes open to see the second coming.

David Freke

Thomas Fox

Landscaping & Maintenance

Garden Maintenance • Mowing
Strimming • Hedge Cutting • Pruning
Leaf Collection • Digging over plots
Patio Jet Wash • Border Maintenance
Water Features • Paving • Fencing
Tree Surgery Services

NEW- Green Waste Removal and Recycling

**FULLY INSURED,
PROFESSIONAL
AND RELIABLE
SERVICE**

office@thomasfoxlandscaping.co.uk
www.thomasfoxlandscaping.co.uk

CALL NOW
TO ARRANGE A
FREE QUOTATION

01295 680691

**UP TO
DATE**

Previous issues of the Tysoe & District Record are available online at www.tysoe.org.uk/tysoe-record.

TENNIS SAFEGUARDING POLICY IN PLACE



As anyone involved in a small club of any kind knows there is often more to it than just enjoying your sport/activity. Tysoe Tennis Club is no exception, and it may interest you to know that we are an LTA (Lawn Tennis Association) accredited club. To achieve this there are a variety of standards that the club needs to meet. One of which is safeguarding.

Current news highlights the importance of safeguarding for any organisation that works with children, young people, or vulnerable adults. The Club's safeguarding policy sets out how it ensures all members are kept safe and can enjoy their tennis without fear of abuse or discrimination in a welcoming and inclusive environment. The Club has a Welfare Officer who receives specialist safeguarding training and all committee members also receive training which is renewed regularly. Details of the Welfare Officer and Warwickshire Safeguarding teams are on our notice board. Safeguarding is a topic at every committee meeting although thankfully there is often nothing to report.

The policies are a bit like insurance – there if you need it although you hope that it is not required. However, any member of the club or their parents can feel confident that the club takes safeguarding very seriously. Tennis is a fantastic sport contributing to both physical and mental wellbeing. We hope that anyone playing at Tysoe Tennis Club has a fun and positive experience.

Nicki Campbell & Colin Locke
Welfare Officer Chair

Club Secretary - Carol Spencer
Email: carol.spencer234@hotmail.co.uk



Tysoe Tennis Club
www.tysoetennisclub.co.uk



LETTERBOX BROWNIES

Order a sumptuous treat as a Thank You, Get Well Soon, Happy Birthday or for yourself!



Box of 4 collected
£5.50 / posted £9.50



Box of 12 collected
£19.00 / posted £23.00



Box 20 collected £29.00 /
posted £33.00

TO ORDER: Call/text Debra on 07964 339739

debra@whitehyacinthcakes.co.uk

For postal orders visit: www.letterboxbrownies.co.uk

Collection from 29 Brindley Way, Fenny Compton, CV47 2ES

Local Pilates & stretch classes

with *Alison*



Mondays

9.15-10.00am - Active Weights

at Oxhill Barns, Oxhill

18.00- 19.00 - Freedom to Move

19.15-20.15pm - Freedom to Move

A blended fusion of balance, strength,

coordination, and flexibility

at Tysae Village Hall

Wednesdays

9.15-10.10 - Pilates for Improvers

10.20-11.15 - The Pilates Practice

at Oxhill Barns, Oxhill

Thursdays

9.00 - 10.00 - The Pilates Practice

10.10 - 11.00 - The Pilates Practice

at Shenington Village Hall

**First Saturday of
the month**

*Trigger Point
Pilates ~
workshops*

TO BOOK EMAIL: alison@alisonmarcuse-harris.co.uk

www.alisonmarcuse-harris.co.uk/classes

The Therapy Rooms at the Old Fire Station



High quality and affordable private physiotherapy in the heart of Tysoe at The Old Fire Station.

Musculoskeletal rehabilitation, sports massage and acupuncture with **Sarah Paterson and Glynn Alderman**, highly experienced Chartered Physiotherapists.

Book your clinic appointment on 07947028454 or purephysiopractice@outlook.com

Visit our website to find out more about prices and conditions treated at www.purephysiopractice.co.uk

We are registered with some insurance companies including AXA PPP & Aviva

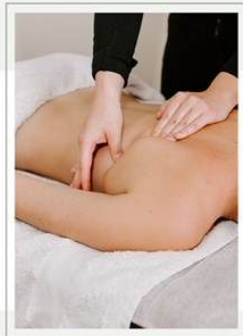
MILLIE ELY MASSAGE THERAPY

Offering high quality sports massage, deep tissue and pregnancy massage at The Old Fire Station, Tysoe.

Whether you've sustained an injury, you've got a few aches and pains or simply in need of some pure relaxation, I'm here to help.

TO SEE TREATMENT PRICES, FIND OUT MORE OR TO BOOK VISIT

WWW.MILLIEELYMASSTHERAPY.COM
EMAIL: bookings@millieelymassage.com



For all your foot health needs

www.purepodiatryclinic.co.uk

Kate Kirby MRCPod

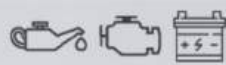
HCPC registered podiatrist with over 16 years' experience.

Diabetes care, corns, callus, ingrown toenails, nail surgery, verrucae, musculoskeletal conditions, biomechanical assessments, orthotic prescription and so much more

Find

or email info@purepodiatryclinic.co.uk

2



Customer Satisfaction | Quality Repairs | Affordable Prices | Dealer Level Quality

01295 738 431

**Servicing | Diagnostics | Exhausts | Brakes | Repairs | Tyres
Wheel Alignment | Batteries | Mot | Health checks | Clutches**

**Unit 18 Sugarswell Business Park
Shenington
Banbury
OX15 6HW**

mbvehicleservices@outlook.com

Knitting-Jennie:
Inspired by Fair Isle



Jennie Ann Rake creates and hand knits Fair Isle themed garments and accessories.
Commissions welcome.

Her range can be viewed on Facebook @
Knitting-Jennie: Inspired by Fair Isle
Enquiries to: jennierake@gmail.com or
01295 688335

**BEGINNERS OIL
PAINTING CLASSES**

Every Friday 9.30 - 12.30
Sibford Village Hall

1st Saturday Monthly
9.30 - 12.30
Shutford Village Hall

Email:
nvfletcher@btinternet.com

Tel: 07792657248

website:
nigelfletcher.co.uk



K. G. Brooks Electrical Ltd
Local family run business
Napit registered
07976677997
01295680738
KBrooks55@btinternet.com



Feldon Flooring

Carpet & Floor Coverings
Supplied & Fitted
Carpet Cleaning

Terry Goodman
Ben Goodman

T: 01295 680871

M: 07772 964 691

M: 07837 044151

E: sales@feldonflooring.com



Tim Clarke Performance Coaching

Private Tuition Available
Friendly teacher
online or face to face tuition
25 years as a qualified teacher
DBS check and references
11 plus
GCSE Maths and English
A level Maths
Tim Clarke
07984 140739 or 01295 678676
clarke.tutoring@btinternet.com
www.clarketutoring.com

THE TRACK HOUSE

BESPOKE QUALITY CURTAINS
Large Selection of Designer Fabrics

POLES & TRACKS
Pole Measuring & Fitting Service
Wooden · Metal · Bent for Angled Windows · Plastic
Corded & Uncorded

BLINDS
Roller · Roman · Velux · Panel · Woodslat · Venetian · Vertical

www.trackhouse.co.uk

E: info@trackhouse.co.uk

Tel: 01608 682001

SHOWROOM
Unit 24
Blackwell Business Park
Blackwell
Shipston-on-Stour
Warwickshire · CV36 4PE




***Jazz Band available for
local private events***

Mainstream / Bebop / Ballads

Contact Paul & Heather on 01295 688376

email: talkdementia.uk@gmail.com

We fundraise for:  talkdementia



New installations
Maintenance, Repairs
and Upgrades
All works undertaken
Domestic, Commercial
or Industrial
Car Charging equipment
installation specialists

Call Craig on

07809 741236
01295 550618

ELECSA
Part P
Registered Contractor
www.elecsa.co.uk

info@ccelectrics.com
www.ccelectrics.com
Middleton Cheney based

Celebrating 70 Years
1952-2022

The Forge Garage (Brailes) Ltd

Your local, family-run garage.

MOT's, Servicing, Air Conditioning, Diagnostics and In-Depth Repair Work

Pump attended fuel station also selling Calor gas, kindling, coal, BBQ coal
We're here to help so please contact us today on 01608 685247 if you have any questions
about your vehicle, or for a free no-obligation quote.



<https://www.theforgegarage.co.uk/>
Telephone: 01608 685247;
Email: enquiries@theforgegarage.co.uk



P. H. GOODMAN & SON LTD

CARPET AND FLOORING SPECIALISTS

Established 1963

Telephone: 01295 680 318 / 277 326

Email: goodmancarpets@gmail.com



national institute of carpet & floorlayers

Lewis Goodman
Howard Goodman



Favourite TV programme over Christmas, the new Wallace and Gromit movie 'Vengeance Most Fowl', featuring a return of the evil Feathers McGraw. Verdict: pure genius!





Generations of Care

R. Locke & Son

Independent Family Funeral Directors – Est 1853

Caution Corner

BRAILES

OX15 5AZ

t: (01608) 685274

Southam Street

KINETON

CV35 0JN

t: (01926) 640386

No. 6 The Precinct

WELLESBOURNE

CV35 9NL

t: (01789) 840744

For more information about our services, to view our funeral announcements and online donations, please visit

www.rlockeandson.co.uk



Golden Charter 
Smart Planning for Later Life

TYSOE PHONE BOOK

District Councillor	Malcolm Littlewood	07514 951 174
Lunch Club	Nicola Rexton	01295 680 058
NGS Open Gardens	Julia Sewell	01295 680 234
Parish Clerk	Charmaine Swift	parish.clerk@tysoe.org.uk
Police, Safer Neighbourhood Team, Shipston		01789 444 670
Poppy Appeal	David Sewell	01295 680316
Post Office	Jacqui Franklin	01295 680632
Shipston Link	David Sewell	01295 680 316
St Mary's Church	Rev'd George Heighton	01295 680 201
Talk Dementia	Paul Dowler	01295 688 376
Tennis Club	Carol Spencer	01295 680 659
Tysoe CofE Primary School	Paige Allister	01295 680 244

Tysoe Children's Group	Yvonne Dillon	01295 680 624
Tysoe Bowls Club	Phil Short	01295 680 732
Tysoe Flower Show	Steve Allen	07808 633 155
Tysoe Heritage Research Group (THRG)	thrg.info@gmail.com	
Tysoe Rainbows	Diane Gibbs	tysoerainbows@hotmail.com
Tysoe Social Club	01295 680 627	
Tysoe Surgery	Dr Raj Kanwar	01295 680 220
Tysoe Utility Trust Grants	Yvonne Dillon	01295 680 567
Tysoe United FC	Steve Allen	07808 633 155
Tysoe Wildlife	Rosemary 01295 680 127	Shirley 680 793
Village Hall Bookings	Jacqueline Franklin	07816 403798
Warwickshire County Cllor	Chris Mills	07966 133607
Women's Institute	Christine Harrop	01295 780 765
WOT2 Grow Orchard	Miranda Forrester	01295 680 265



Sun Rising

Natural Burial Ground

and Nature Reserve, Lower Tysoe

A place of deep peace where loved ones can be laid to rest in growing woodland and wildflower meadows. All are welcome at this beautifully managed site.

01295 688488
sunrising.co.uk



RED HORSE VALE



Red Horse Vale is a long established, family run fuel distributor. We have been supplying homes and farms with fuel since 1965. During that time we have never changed our focus or philosophy which is to provide a superior and personal service.



**HEATING OIL • RED & WHITE DIESEL • LOGS • COAL
WOOD PELLETS • KINDLING • COMPOST • TIMBER &
SLEEPERS • MANURE • TOP SOIL • GARDEN TOOLS
PET FEED • HORSE FEED • BEDDING • EQUINE SUPPLIES**

From pick-up loads and transits of logs to bulk bags of building sand, top soil or aggregates- we have an impressive fleet of vehicles to service your delivery requirements.



SHOP IN-STORE OR ONLINE

www.redhorsevale.co.uk



Opening hours
Monday- Saturday
8am- 5pm



Red Horse Vale, Windmill Farm, Banbury Road (A422),
Oxhill, Warwickshire, CV35 0RP
01926 642 832

